

2025 AUTOMOTIVE CATALOG



MAXXIS

TABLE OF CONTENTS

PRODUCT RANKINGS	2
COMPETITION	3
VICTRA RC-1	4
ULTRA HIGH PERFORMANCE	5
VICTRA VR-1	6
VICTRA SPORT VR2	7
VICTRA SPORT AS	9-10
VICTRA SPORT EV	11-12
PASSENGER CAR RADIAL	13
BRAVO HP-M3	15
MA-202	16
LIGHT TRUCK	17
BRAVO HT-770	19
BRAVO AT-771	20
RAZR HT	21
RAZR AT-S	23-24
RAZR AT	25-26
RAZR MT	28
EXTREME OFF-ROAD	29
TREPADOR BIAS M8060	31
TREPADOR COMPETITION M8060	32
COMMERCIAL	33
BRAVO UE-168(N)	34
TRAILER	35
M8008 <i>Plus</i>	37
UR275	38
TIRE SPECIFICATIONS	39-50
SAFETY INFORMATION	51-54



PRODUCT RANKINGS

	UHP	UHP	UHP	UHP	PCR	PCR
	VR-1	VR2	VS-AS	VS-EV	HP-M3	MA-202
Dry Performance						
Wet Performance						
Ride Refinement						
Rolling Resistance						
Tread Wear						
Vehicle Fitments	Sports Car / Sports Sedan 	Sports Car / Sports Sedan 	Sports Car / Sports Sedan Crossover Compact Car	Sports Car / Sports Sedan Family Sedan	Family Sedan Crossover Mini Van	Family Sedan Compact Car Mini Van

	LT	LT	LT	LT	LT	LT
	HT-770	AT-771	RAZR HT	RAZR AT-S	RAZR AT	RAZR MT
On-Road Performance						
Noise Performance						
Tread Wear						
Dirt Performance						
Mud Performance						
Vehicle Fitments	SUV Pick-Up Truck	SUV Pick-Up Truck	SUV Pick-Up Truck	SUV Pick-Up Truck	SUV Pick-Up Truck	SUV Pick-Up Truck

	EXTREME OFF-ROAD	EXTREME OFF-ROAD	COMMERCIAL	COMPETITION
	TREP. BIAS	TREP. COMP	UE-168(N)	RC-1
On-Road Performance				
Noise Performance				
Rock Performance				
Dirt Performance				
Mud Performance				
Vehicle Fitments	SUV Pick-Up Truck	SUV Pick-Up Truck	Pick-Up Truck Van	Sports Car / Sports Sedan Sports Sedan

COMPETITION

COMPETITION



VICTRA RC-1



A race tire built by racers, for racers. Whether you're a club racer, track day enthusiast or an enduro racing warrior, the Victra RC-1 was designed to deliver an addictive combination of grip, handling and heat cycle performance. Maxxis does not recommend mixing different compounds on the same vehicle, so please visit maxxis.com to learn more.

- UTQG 100 A A
- DOT-approved R-compound race tire designed for dry road racing applications ONLY
- Specially formulated racing compound delivers outstanding dry traction while retaining excellent heat cycle and wear performance
- Balanced sidewall design delivers smooth breakaway characteristics and excellent handling
- Dual wide circumferential grooves designed to perform under sudden wet weather conditions
- Due to the nature of the tread compound, these tires require special care when stored in near-freezing temperatures. Please visit www.maxxis.com for more details.

205/50ZR15	235/40ZR17	275/40ZR17
225/45ZR15	245/45ZR17	235/40ZR18
245/40ZR15	255/40ZR17	265/35ZR18
225/45ZR17	275/35ZR17	275/35ZR18

For complete specifications see page 41.

ULTRA HIGH PERFORMANCE

UHP



VICTRA VR-1



UHP

Designed for the motorsports enthusiast, the Victra VR-1 is a tire for drivers who want it all. The VR-1 features a compound that warms to operating temperature quickly and provides tenacious dry traction on the street or the track. The VR-1's compound also heat cycles well, ensuring consistent lap times throughout the life of the tire. The new pattern was designed to maximize dry performance while minimizing white-knuckle moments in wet weather. The reinforced casing design provides almost telepathic responses, allowing the driver to put the car where it needs to be. Now available in an updated S2 compound. Maxxis does not recommend mixing different compounds on the same vehicle, so please visit maxxis.com to learn more.

- UTQG 200 AA A
- Compound reaches operating temperatures quickly and provides excellent dry traction and good heat cycling performance
- Reinforced casing and sidewall design provide the ultimate driving experience
- Pattern design maximizes dry performance while minimizing white knuckle moments in wet conditions
- Due to the nature of the tread compound, these tires require special care when stored in near-freezing temperatures. Please visit www.maxxis.com for more details.

205/50ZR15	235/40ZR17	275/40ZR17
225/45ZR15	245/45ZR17	235/40ZR18
245/40ZR15	255/40ZR17	265/35ZR18
225/45ZR17	275/35ZR17	275/35ZR18

For complete specifications see page 41.

NEW

VICTRA SPORT VR2



Designed for PB (Personal Best) hunters, weekend warriors and everyone in between, the VICTRA SPORT VR2 is our ultimate street and track tire. The new reinforced carbon black compound arrives at operating temperature quickly, delivering the same strong heat-cycle performance as the VR-1. A state-of-the-art aggressive pattern maximizes contact for full-throttle on-track performance, while retaining solid wet performance for those sudden downpours. Maxxis' engineers created a brand-new casing design with ultra-high stiffness for near-telepathic responses to every input.

- UTQG 200 A A
- Next-generation racing compound with ultra-reinforced carbon black reaches operating temperature quickly and delivers a new level of dry traction along with excellent heat-cycle performance
- Brand new casing design optimizes contact footprint and sharpens vehicle response for a more responsive driving experience
- Aggressive new pattern design maximizes dry performance while retaining solid wet performance, delivering speed and control on the street and on the track
- Due to the nature of the tread compound, these tires require special care when stored in near-freezing temperatures. Please visit www.maxxis.com for more details.

205/50ZR15	265/35ZR18
225/45ZR15	275/35ZR18
255/40ZR17	275/35ZR19

For complete specifications see page 41.



**COMING
SOON**

VICTRA SPORT AS



Designed for drivers who want a premium driving experience, the new Victra Sport AS (All-Season) proves that sophistication doesn't have to be boring. The engineers started with a high-strength dual-cord casing design which gives you a surefooted driving feel and responsive handling. The asymmetric pattern design has a computer-optimized tread pattern for sporty driving as well as a suite of technologies to minimize pattern noise. The new nano-silica compound coupled with our advanced sipe designs improves traction under wet and light snow conditions.

- UTQG 500 AA A
- New serrated circumferential groove design works like an anechoic chamber which reduces noise resonance for a relaxing premium driving experience
- Multangular sipe arrangement adds biting edges in multiple directions, improving traction in inclement weather and mild snow
- Offset lateral groove design disperses and traps pattern noise for a more serene cabin
- Maxxis Optim-Tech utilizes our latest computer software to optimize tread block arrangement for reduced pattern noise
- Maxxis dual-cord casing design elevates casing rigidity for responsive handling
- Full nano silica compound enhances traction under wet conditions

Sizes under development

205/55R16	225/45R17	245/45R17	235/45R18	245/40R19
205/50R17	225/50R17	225/40R18	235/50R18	245/45R19
215/45R17	235/45R17	225/45R18	245/40R18	255/40R19
215/50R17	235/50R17	225/50R18	245/45R18	245/40R20
215/55R17	235/55R17	235/40R18	235/40R19	245/45R20

TECHNOLOGY

Serrated Circumferential Grooves

Minimizes pipe resonance for a relaxing and premium driving experience.



3D Sipe Design

Three-dimensional sipe design reduces tread squirm compared to traditional sipes for improved steering feel and driving confidence and reduced irregular wear.

Multangular Sipe Arrangement

Innovative sipe arrangement adds biting edges in all directions, improving traction in inclement weather and mild snow.

Off-Set Lateral Groove Design

New lateral groove design with off-set positioning disperses and traps pattern noise for a more serene cabin.

VICTRA SPORT EV

UHP



The Victra Sport EV is our newest ultra high performance summer tire for electrified vehicles. The next-generation EV compound was specially designed to lower rolling resistance, reduce pattern and road noise and enhance treadwear and traction. This tire combines Maxxis Silent Technology, Maxxis Optim-Tech and premium high-strength materials to give drivers a higher level of balanced performance.

- UTQG 340 A A
- Next-generation energy-saving EV compound helps improve rolling resistance while increasing driving range and tread mileage
- New Maxxis Silent Technology features sound-absorbing foam that reduces cavity resonance and minimizes overall tire noise
- Innovative tread with double-chamfered sipe design improves water dispersion and tread wear throughout the life of the tire

235/45R18	255/50R19
235/40R19	235/50R20
235/50R19	255/40R20
235/55R19	255/45R20
245/45R19	265/45R20
255/45R19	275/45R20

For specifications see page 42.

TECHNOLOGY



New Generation EV Compound

Fifth generation energy-saving formula reduces energy loss due to friction and resulting in improved rolling resistance and increased mileage

Maxxis Silent
Sound-absorbing foam technology reduces cavity resonance and minimizes overall tire noise



Deeper Rib with Lightning Sipe Design

Improves water dispersion and wear performance throughout the life of the tire

PASSENGER CAR RADIAL

PASSENGER





BRAVO HP-M3



PASSENGER

An all-season premium touring tire with passenger car, crossover and SUV fitments, the Bravo HP-M3 was designed as an all-around performer in dry and wet conditions as well as light snow. The HP-M3 features cross-hatch sipes across the tread for added traction on slippery surfaces, while the four circumferential grooves improve hydroplaning resistance.

- UTQG 700 A A
- H-rated sizes, 70,000-mile limited treadwear warranty*
- V-rated sizes, 60,000-mile limited treadwear warranty*
- W-rated sizes, 50,000-mile limited treadwear warranty*
- 5-rib pattern design engineered to improve tire wear, pattern noise and high-speed stability
- 4 main circumferential grooves expel water quickly for improved hydroplaning resistance
- Streamlined lateral groove design improves overall wet performance
- M&S All-season rated
- Available in passenger, crossover and SUV sizes
- Rim Diameter: 16-20 inch

*visit maxxis.com for complete warranty details
(see dealer for specific UTQG information)

For specifications see pages 42-43.

MA-202



PASSENGER

A standard touring tire with great wet weather performance, the MA-202 features six circumferential grooves to maximize hydroplaning resistance for ultimate peace of mind. The MA-202 also features a jointless spiral wound cap ply to maximize high-speed stability.

- UTQG 280 A B - 400 A A
- Jointless spiral-wound cap ply maximizes ride refinement and durability
- Six circumferential grooves for outstanding hydroplaning resistance and wet weather handling
- Full casing reinforcement package for extra durability
- Five-rib pattern design for improved wear pattern and reduced pattern noise
- M+S All-Season rated

155/80R12	175/70R13	185/60R14	195/65R14	185/65R15	205/65R15	215/55R16
155/80R13	185/70R13	185/65R14	195/70R14	195/60R15	215/60R15	215/60R16
165/70R13	175/65R14	185/70R14	205/70R14	195/65R15	215/65R15	215/65R16
165/80R13	175/70R14	195/60R14	185/60R15	205/60R15	205/55R16	225/60R16

For complete specifications see page 44.

LIGHT TRUCK

LIGHT TRUCK





LIGHT TRUCK

BRAVO HT-770



Consistently popular with LT/SUV drivers, the Bravo HT-770 is Maxxis' classic highway terrain tire. Using feedback from our sponsored drivers, Maxxis created a sidewall design that delivers a supple ride while maintaining excellent stability under heavy braking and crosswinds. The Bravo HT-770's closed shoulder pattern design and multi-pitch tread blocks create a more serene driving experience.

- UTQG 640 A B (Non-LT Sizes ONLY)
- UTQG 500 A A - 500 A B (Non-LT Sizes Only)
- 60,000-mile limited treadwear warranty for non-LT sizes*
- Ripple sipe design improves overall wear pattern and traction on slippery surfaces
- Dual circumferential grooves increase water dispersion efficiency, providing outstanding resistance to hydroplaning
- Multi-pitch tread blocks minimize pattern noise to create a quiet cabin
- Closed shoulder design limits noise resonance from tread area, further reducing cabin noise
- M&S All-Season rated
- Available in Hard metric, Flotation and LT sizes
- Rim Diameter: 15 - 20 inch

*visit maxxis.com for complete warranty details
(see dealer for specific UTQG information)

For specifications see pages 44-45.

BRAVO AT-771



The Bravo AT-771 is ready for asphalt, dirt, mud and everything in between. This rugged tire achieves its well-known durability via wave siping in the pattern and a jointless spiral-wound cap ply. Staggered shoulder lugs deliver extra off-road traction, while 3D tread blocks guard against irregular wear, and the multi-pitch tread blocks provide a quieter ride with minimized pattern noise.

- UTQG 500 A A - 500 A B (Non-LT Sizes Only)
- 50,000-mile limited treadwear warranty for non-LT sizes*
- Multi-pitch tread pattern minimizes pattern and road noise for excellent off-road performance
- Staggered shoulder lug design delivers extra traction, while a jointless spiral-wound cap ply offers a refined ride and impressive durability
- 3D tread blocks minimize irregular wear for better overall stability and tread stiffness
- Four U-shaped circumferential grooves decrease rock retention and resist hydroplaning
- M&S All-Season rated
- Available in Hard metric, Flotation and LT sizes
- Rim Diameter: 15 – 20 inch

*visit maxxis.com for complete warranty details
(see dealer for specific UTQG information)

For specifications see pages 45-46.

RAZR HT



Developed using Maxxis' latest R&D, the RAZR HT is our new flagship highway terrain tire. Off-set horizontal grooves, triple-layered bridges and semi-closed shoulder pattern result in longer wear and a quiet ride. An optimized pitch tread block arrangement and pattern deliver maximal grip. Four circumferential grooves excel in wet conditions. An updated pattern design and sidewall provide a modern, appealing look.

LIGHT TRUCK

- UTQG 700 A A (Non LT Sizes ONLY)
- 70,000-mile limited treadwear warranty for non-LT sizes
- 50,000-mile limited treadwear warranty for LT sizes
- Off-set horizontal grooves and triple-layered bridges in pattern deliver longer wear and a quiet ride
- Closed shoulder design with closed-end sipes
- limits pattern noise resonance, further reducing cabin noise
- Four circumferential grooves increase water dispersion, improving hydroplaning resistance and delivering superb wet weather performance
- Optimized pattern and construction design plus a new, improved HT compound provide excellent grip and wear
- M&S All-Season rated

235/75R15	265/70R16	245/70R17	245/60R18	255/55R20*	LT235/85R16
215/70R16	265/75R16	255/65R17*	255/65R18	265/50R20	LT245/75R16
225/70R16	275/70R16	255/70R17	265/60R18	275/55R20	LT235/80R17
235/70R16	225/65R17	265/65R17	265/65R18	275/60R20	LT245/75R17*
235/75R16*	235/60R17*	265/70R17	275/65R18	285/50R20	LT265/70R17
245/70R16	235/65R17	225/60R18	285/60R18	275/50R22*	LT275/65R18*
245/75R16	235/75R17	235/60R18*	245/55R19	285/45R22*	LT275/70R18*
255/70R16	245/65R17	235/65R18	255/50R20*	LT225/75R16	LT275/65R20*

*sizes under development

For complete specifications see pages 46-47.




LIGHT TRUCK



NEW RAZR AT-S



Whether conditions are snowy, wet or dry, on or off-road, the RAZR AT-S (AT Sport) delivers what outdoor enthusiasts want most: all-weather traction, rugged wear and a peaceful ride. Designed for light-duty vehicles, the AT-S features our latest tread optimization and compound technology. These innovative features deliver a high level of on and off-road performance plus the rugged design that outdoor enthusiasts expect from Maxxis.

- UTQG 660 A B (Non-LT Sizes ONLY)
- Next-generation all-terrain compound featuring Polymer Optimization Technology enhances tread wear and cut/chip resistance for improved mileage
- S-shaped center blocks enhance pattern stability to improve traction on any terrain
- Optimized tread pitch-arrangement reduces pattern noise for a quieter on-road ride
- Robust RAZR sidewall design offers rugged looks and protection for challenging off-road and on-road conditions
- Mountain Snowflake (3PMSE) certified  for severe winter traction
- M&S All-Season rated

235/75R15	225/60R17*	265/65R17	265/50R20*	LT235/85R16*	LT265/70R17
235/70R16*	225/65R17	265/70R17*	275/55R20	LT245/75R16*	LT285/70R17
245/70R16	235/65R17*	285/70R17*	275/60R20*	LT265/70R16*	LT275/70R18*
255/70R16	245/65R17	245/60R18*	285/45R22*	LT265/75R16*	LT275/65R20*
265/70R16	255/65R17*	265/60R18	LT235/75R15*	LT245/75R17*	30X9.50R15LT*
265/75R16*	255/70R17	275/65R18*	LT225/75R16*	LT265/65R17	31X10.50R15LT

*sizes under development

For complete specifications see page 47.

TECHNOLOGY



Saw-toothed Circumferential Grooves

Improved snow shearing force along four circumferential grooves enhances snow traction and water drainage



Jagged Lateral Grooves

Staggered jagged grooves disperse water, sand, and snow more efficiently, improving handling and braking performance



Semi-continuous Center Rib

S-shaped center blocks enhance pattern stability to improve traction on any terrain



Reinforcement Bridges

High-stiffness bridge design helps to minimize tread block movement, suppressing pattern noise and reducing irregular wear

RAZR AT



Our flagship all-terrain tire builds on the strengths of the Bravo AT-771. Chemical fillers in the RAZR AT's compound maximize tread life and resist tears and chips. Three-D tread blocks and bridge reinforcements minimize noise and irregular wear, and the armor sidewall design optimizes sidewall traction and puncture resistance. An innovative dual-cord casing design ensures durability and a comfortable ride.

- UTQG 600 A A - 600 A B
- 60,000-mile limited treadwear warranty for P-metric sizes*
- 50,000-mile limited treadwear warranty for LT sizes*
- Off-road compound with advanced chemical fillers optimizes resistance to tears and delivers excellent tread life
- Maxxis dual-cord technology provides superior durability and casing strength
- Aggressive armor sidewall design maximizes sidewall traction and puncture resistance
- All-terrain tread design featuring 3D tread blocks and bridge reinforcements minimizes pattern noise and delivers longer wear
- Mountain Snowflake (3PMSF) certified 
- M&S All-Season rated
- Load Range C, D, E, F

*visit maxxis.com for complete warranty details
(see dealer for specific UTQG information)

245/75R16	265/70R17	LT245/75R16	LT265/60R18	LT275/60R20	LT285/55R22	37X12.50R20LT
255/70R16	P285/70R17	LT265/70R16	LT265/70R18	LT275/65R20	31X10.50R15LT	37X13.50R20LT
265/70R16	255/70R18	LT265/75R16	LT275/65R18	LT285/55R20	35X11.50R17LT	40X13.50R20LT
265/75R16	265/60R18	LT285/75R16	LT275/70R18	LT285/65R20	35X12.50R17LT	35X12.50R22LT
225/60R17	265/65R18	LT245/75R17	LT285/65R18	LT295/55R20	37X12.50R17LT	37X12.50R22LT
225/65R17	275/65R18	LT265/65R17	LT285/75R18	LT295/60R20	33X12.50R18LT	37X13.50R22LT
235/65R17	265/50R20	LT265/70R17	LT295/70R18	LT295/65R20	35X12.50R18LT	37X13.50R24LT
245/65R17	275/55R20	LT285/70R17	LT265/60R20	LT305/55R20	33X12.50R20LT	
265/65R17	275/60R20	LT295/70R17	LT275/55R20	LT285/50R22	35X12.50R20LT	

For complete specifications see pages 47-48.

TECHNOLOGY



Unique RAZR tread pattern enhances grip and promotes outstanding traction on every type of terrain

Open groove tread design promotes superior evacuation of water, mud and debris

Anti-Pack convex shoulder blocks maximize tread cleanout with every revolution

3D Sipes strengthen the tread blocks to provide superior handling and performance

Stepped chamfering design provides superior rigidity that ensures even uniform wear

LIGHT TRUCK

Stepped shape with sidewall protection aids in preventing punctures

Shield shape prevents the shoulder block from tearing



3D step design sidewall text "RAZR AT" enhances the visual component of the tires

LIGHT TRUCK



RAZR MT



Our flagship mud terrain tire, the RAZR MT was created with input from Maxxis' championship-winning sponsored athletes. Chemical fillers in the RAZR MT's off-road compound deliver maximum tear and chip resistance as well as tread life. The innovative armor sidewall design maximizes traction and puncture resistance, while the dual core casing and 3-body-ply technology enhance toughness and durability.

- 40,000-mile limited treadwear warranty*
- Off-road compound with new chemical fillers delivers superlative tear resistance and tread life
- Maxxis dual-cord casing technology dramatically improves casing strength for superior durability and toughness, while 3-body-ply construction in select sizes provides additional puncture resistance and toughness
- Innovative armor sidewall design provides maximal sidewall traction and puncture resistance
- Pattern design featuring deeply sculpted center blocks offers excellent off-road traction with minimized pattern noise
- M&S All-Season rated
- Three-ply construction for additional puncture resistance and durability
- Available in Flotation and LT sizes
- Rim Diameter 16 - 24 inch
- Load Range C, D, E, F

*visit maxxis.com for complete warranty details

For specifications see pages 48-49.

EXTREME OFF-ROAD



EXTREME OFF-ROAD



EXTREME OFF-ROAD

TREPADOR BIAS



Designed to conquer off-road terrain with ease, the Trepador Bias M8060 features a conformable bias-ply casing with an ultra-aggressive sidewall design for excellent off-road traction on sand and rocks. To improve on-road stability and performance, the tire also features nylon belt reinforcement for extra high-speed stability while also improving puncture resistance.

- Heavy-duty bias ply construction for excellent durability and tread flexibility
- Multi-curve tread siping improves traction on loose dirt and slippery terrain
- Unique tread element arrangement ensures a uniform contact area for maximum road contact
- Aggressive side lug design provides improved side-bite on difficult off-road and rocky terrain
- Nylon belt-reinforced tire construction improves puncture resistance and high-speed stability
- DOT-approved for highway use. Maximum recommended speed is 65 mph.

35X12.50-15LT	35X12.50-17LT	40X13.50-17LT
35X12.50-16LT	37X12.50-17LT	42X14.50-17LT
37X12.50-16LT	37X13.50-17LT	35X12.50-20LT

For complete specifications see page 49.

TREPADOR COMPETITION



Based on the Trepador Bias, the legendary Trepador Competition M8060 uses the same construction and pattern design but features a sticky race tread compound for the ultimate in off-road traction. Due to the nature of the compound, it is not recommended for use in winter conditions.

- Heavy-duty bias-ply construction for excellent durability and tread flexibility
- Aggressive soft competition tread compound for ultimate off-road traction
- Multi-curve tread siping improves traction on loose dirt and slippery terrain
- Unique tread element arrangement ensures uniform contact area for maximum road contact
- Aggressive side lug design provides improved side-bite on difficult off-road and rocky terrain
- Nylon belt-reinforced tire construction improves puncture resistance and high-speed stability
- Do not use in winter conditions - Please visit www.maxxis.com for more details.
- Recommended for competition use only

37X12.50-17LT
40X13.50-17LT
42X14.50-17LT

For complete specifications see page 50.

EXTREME OFF-ROAD

COMMERCIAL



COMMERCIAL

BRAVO UE-168 (N)



Well-known for its durability, the UE-168 features a tough construction design with high-end rugged materials. The rib pattern design improves overall tread wear, while the shoulder grooves help improve all-season traction in inclement weather.

- Double steel-belted construction for long-lasting wear and uniformity
- Jointless spiral-wound cap-ply maximizes ride refinement and durability
- Rib-type tread design with deep shoulder grooves provides all-season capability
- Continuous shoulder ribs provide smooth, even tread wear and increased tread life
- Premium rubber compound and extra plies resist cuts, punctures and abrasions
- Extra heavy-duty sidewall construction delivers responsive handling and performance in demanding commercial applications

185R14C	LT235/75R15
205R14C	LT215/85R16
205/70R14C	LT225/75R16
215/70R15C	LT235/85R16
225/70R15C	LT235/80R17

For complete specifications see page 50.

COMMERCIAL

TRAILER



TRAILER



TRAILER

M8008 *Plus*



The new MAXXIS M8008 *Plus* is an all-purpose specialty trailer tire engineered to further improve the already-stellar performance of our iconic M8008. Designed for the increased demands of modern travel trailers, boat trailers and toy haulers, the new M8008 *Plus* uses an advanced tread and sidewall compound to maximize UV and heat resistance while improving rolling resistance.

- Engineered for high-load applications, the M8008 *Plus* tread compound was specially formulated to minimize heat generation and incorporates premium anti-oxidant agents for superior weather protection and durability
- Unique apex rubber design features a softer compound to absorb shock and minimize heat generation during high-load operations
- Optimized tire construction and upgraded inner liner compound significantly enhances durability
- Better Air Retention. New inner liner compound, with increased thickness, minimizes the air loss rate to maintain optimal inflation for longer service life
- Better rolling resistance, which results in better trailer fuel economy
- With Best in Class tire spring rate (less deflection under load), M8008 *Plus* offers greater load carrying capability and durability

ST175/80R13
ST185/80R13
ST205/75R14
ST215/75R14

ST205/75R15
ST225/75R15
ST235/80R16

For complete specifications see page 50.

UR275



The Maxxis UR275 is a premium all-steel trailer tire designed for fifth-wheel travel trailers, toy haulers, and premium boat trailers. An innovative tire bead design and computer-optimized construction deliver class-leading load-carrying performance and high-speed endurance for peace of mind on your next adventure.

- Innovative bead design improves load-carrying performance over market leader by 16%, offering extra peace of mind under demanding load conditions
- Computer-optimized construction design and premium materials improve high-speed endurance over market leader by 50%, offering further peace of mind during prolonged highway travel and in demanding load conditions
- Advanced compound design minimizes oxidation cracking and prolongs tire life significantly over market leader
- New ST-belt technology reduces stress and strain at belt edge for reduced irregular wear

ST235/85R16
ST235/80R16
215/75R17.5

For complete specifications see page 50.

TIRE SPECIFICATIONS





VICTRA RC-1



PART #	SIZE	Service Description	Sidewall	Overall Diameter (in.)	Section Width (in.)	APPROVED Rim Width (in.)	Tread Depth (in.)	Max Load (lbs)	UTQG
TP00096800	205/50ZR15^	86W	BSW	23.0	8.3	5.5-(6.5)-7.5	6/32	1168	100 A A
TP00096900	225/45ZR15^	87W	BSW	22.9	9.1	7.0-(7.5)-8.5	6/32	1201	100 A A
TP00148100	245/40ZR15^	88W	BSW	22.7	9.9	8.0-(8.5)-9.5	6/32	1235	100 A A
TP00147800	225/45ZR17^	94W XL	BSW	24.9	9.0	7.0-(7.5)-8.5	6/32	1477	100 A A
TP00058800	235/40ZR17^	90W	BSW	24.3	9.6	8.0-(8.5)-9.5	6/32	1323	100 A A
TP00148200	245/45ZR17^	99W XL	BSW	25.6	9.8	7.5-(8.0)-9.0	6/32	1709	100 A A
TP00058700	255/40ZR17^	94W	BSW	24.9	10.3	8.5-(9.0)-10.0	6/32	1477	100 A A
TP00168900	275/35ZR17^	94W	BSW	24.6	11.2	9.0-(9.5)-11.0	6/32	1477	100 A A
TP00148300	275/40ZR17^	98W	BSW	25.6	10.7	9.0-(9.5)-11.0	6/32	1653	100 A A
TP00148000	235/40ZR18^	91W	BSW	25.6	9.7	8.0-(8.5)-9.5	6/32	1356	100 A A
TP00169100	265/35ZR18^	97W XL	BSW	25.5	10.9	9.0-(9.5)-10.5	6/32	1609	100 A A
TP00169000	275/35ZR18^	99W XL	BSW	25.7	11.1	9.0-(9.5)-11.0	6/32	1709	100 A A

VICTRA VR-1



PART #	SIZE	Service Description	Sidewall	Overall Diameter (in.)	Section Width (in.)	APPROVED Rim Width (in.)	Tread Depth (in.)	Max Load (lbs)	UTQG
TP01828100	205/50ZR15#	86W	BSW	23.1	8.4	5.5-(6.5)-7.5	9/32	1168	200 AA A
TP02306100	225/45ZR15#	87W	BSW	23.0	8.8	7.0-(7.5)-8.5	9/32	1202	200 AA A
TP01929100	245/40ZR15#	88W	BSW	22.7	9.8	8.0-(8.5)-9.5	9/32	1235	200 AA A
TP02094100	205/55R16#	91V	BSW	24.8	8.3	5.5-(6.5)-7.5	9/32	1356	200 AA A
TP00000700	215/40ZR16#	86W XL	BSW	22.8	8.6	7.0-(7.5)-8.5	9/32	1169	200 AA A
TP02286100	215/40ZR17#	83W	BSW	23.7	8.6	7.0-(7.5)-8.5	9/32	1074	200 AA A
TP02321100	225/45ZR17#	94W XL	BSW	25.2	8.9	7.0-(7.5)-8.5	9/32	1477	200 AA A
TP00000600	245/40ZR17#	95W XL	BSW	24.7	9.7	8.0-(8.5)-9.5	9/32	1521	200 AA A
TP00047200	255/40ZR17#	94W	BSW	25.0	10.2	8.5-(9.0)-10.0	9/32	1477	200 AA A
TP02294100	225/40ZR18#	88W	BSW	25.2	9.1	7.5-(8.0)-9.0	9/32	1235	200 AA A
TP02303100	245/40ZR18#	93W	BSW	25.7	9.7	8.0-(8.5)-9.5	9/32	1433	200 AA A
TP00000800	255/35ZR18#	94W XL	BSW	25.0	10.4	8.5-(9.0)-10.0	9/32	1477	200 AA A
TP00013400	265/35ZR18#	97W XL	BSW	25.5	10.8	9.0-(9.5)-10.5	9/32	1609	200 AA A
TP02285100	275/35ZR18#	99W XL	BSW	25.7	11.1	9.0-(9.5)-11.0	9/32	1709	200 AA A
TP00004400	285/35ZR18#	101W XL	BSW	25.9	11.6	9.5-(10.0)-11.0	9/32	1819	200 AA A
TP00023500	295/40ZR18#	103W	BSW	27.4	11.9	10.0-(10.5)-11.5	9/32	1929	200 AA A

VICTRA SPORT VR2



PART #	SIZE	Service Description	Sidewall	Overall Diameter (in.)	Section Width (in.)	APPROVED Rim Width (in.)	Tread Depth (in.)	Max Load (lbs)	UTQG
TP00430200	205/50ZR15	86W	BSW	23.1	8.5	5.5-(6.5)-7.5	7.5/32	1168	200 A A
TP00430100	225/45ZR15	87W	BSW	22.8	9.1	7.0-(7.5)-8.5	7.5/32	1201	200 A A
TP00430300	255/40ZR17	98W XL	BSW	25.1	10.4	8.5-(9.0)-10.0	7.5/32	1653	200 A A
TP00375600	265/35ZR18	97W XL	BSW	25.3	10.9	9.0-(9.5)-10.5	7.5/32	1609	200 A A
TP00430400	275/35ZR18	99W XL	BSW	25.6	10.9	9.0-(9.5)-11.0	7.5/32	1709	200 A A
TP00430500	275/35ZR19	100W XL	BSW	26.6	10.9	9.0-(9.5)-11.0	7.5/32	1764	200 A A

VICTRA SPORT EV



PART #	SIZE	Service Description	Sidewall	Overall Diameter (in.)	Section Width (in.)	APPROVED Rim Width (in.)	Tread Depth (in.)	Max Load (lbs)	UTQG
TP0036330F	235/45R18	98Y XL	BSW	26.4	9.6	7.5-(8.0)-9.0	8/32	1653	340 AA A
TP0038850F	235/40R19	96W XL	BSW	26.3	9.7	8.0-(8.5)-9.5	8/32	1565	340 AA A
TP0041240F	235/50R19	103V XL	BSW	28.2	9.6	6.5-(7.5)-8.5	8/32	1929	340 AA A
TP0043580F	235/55R19	105V XL	BSW	29.3	9.7	6.5-(7.5)-8.5	8/32	2039	340 AA A
TP0043400F	245/45R19	102W XL	BSW	27.8	9.6	7.5-(8.0)-9.0	8/32	1874	340 AA A
TP0043460F	255/45R19	104W XL	BSW	28.1	10.2	8.0-(8.5)-9.5	8/32	1984	340 AA A
TP0041230F	255/50R19	107V XL	BSW	29.2	10.4	7.0-(8.0)-9.0	8/32	2149	340 AA A
TP0041200F	235/50R20	104V XL	BSW	29.4	9.6	6.5-(7.5)-8.5	8/32	1984	340 AA A
TP0043450F	255/40R20	101W XL	BSW	28.1	10.2	8.5-(9.0)-10.0	8/32	1819	340 AA A
TP0043570F	255/45R20	105W XL	BSW	29.2	10.1	8.0-(8.5)-9.5	8/32	2039	340 AA A
TP0043630F	265/45R20	108Y XL	BSW	29.5	10.6	8.5-(9.0)-10.0	8/32	2205	340 AA A
TP0043620F	275/45R20	110Y XL	BSW	29.9	10.9	8.5-(9.0)-10.5	8/32	2337	340 AA A

BRAVO HP-M3



PART #	SIZE	Service Description	Sidewall	Overall Diameter (in.)	Section Width (in.)	APPROVED Rim Width (in.)	Tread Depth (in.)	Max Load (lbs)	UTQG
TP00297300	195/55R16	87V	BSW	24.4	7.8	5.5-(6.0)-7.0	10/32	1201	700 AA A
TP00119700	205/50R16	87V	BSW	24.2	8.3	5.5-(6.5)-7.5	10/32	1201	700 AA A
TP00111300	205/55R16	91V	BSW	24.9	8.3	5.5-(6.5)-7.5	10/32	1356	700 AA A
TP50745700	205/60R16	92V	BSW	25.7	8.2	5.5-(6.0)-7.5	10/32	1389	700 AA A
TP40939900	205/65R16	95H	BSW	26.7	8.3	5.5-(6.0)-7.5	10/32	1521	700 AA A
TP02297100	205/70R16	97H	BSW	27.4	8.1	5.0-(6.0)-7.0	10/32	1609	700 AA A
TP00591000	215/55R16	93V	BSW	25.2	8.8	6.0-(7.0)-7.5	10/32	1433	700 AA A
TP50747400	215/60R16	95V	BSW	26.1	8.7	6.0-(6.5)-7.5	10/32	1521	700 AA A
TP00211500	215/65R16	98V	BSW	26.9	8.7	6.0-(6.5)-7.5	10/32	1653	700 AA A
TP02298100	215/70R16	104H XL	BSW	27.9	8.8	5.5-(6.5)-7.0	10/32	1984	700 AA A
TP01802000	225/50R16	92V	BSW	25.0	9.1	6.0-(7.0)-8.0	10/32	1389	700 AA A
TP00268000	225/55R16	95V	BSW	25.7	9.1	6.0-(7.0)-8.0	10/32	1521	700 AA A
TP00743300	225/60R16	98V	BSW	26.6	9.1	6.0-(6.5)-8.0	10/32	1653	700 AA A
TP00074500	225/65R16	100V	BSW	27.6	9.2	6.0-(6.5)-8.0	10/32	1764	700 AA A
TP02299100	225/70R16	107H XL	BSW	28.5	9.0	6.0-(6.5)-7.5	10/32	2149	700 AA A
TP41011800	235/60R16	100V	BSW	27.1	9.6	6.5-(7.0)-8.5	10/32	1764	700 AA A
TP02319100	235/70R16	109H XL	BSW	29.0	9.4	6.0-(7.0)-8.0	10/32	2271	700 AA A
TP00074200	205/45R17	88V XL	BSW	24.3	8.1	6.5-(7.0)-7.5	10/32	1235	700 AA A
TP42389700	205/50R17	93V XL	BSW	25.2	8.3	5.5-(6.5)-7.5	10/32	1433	700 AA A
TP00143200	215/45R17	91V XL	BSW	24.7	8.3	7.0-(7.0)-8.0	10/32	1356	700 AA A
TP42392800	215/50R17	95V XL	BSW	25.6	8.9	6.0-(7.0)-7.5	10/32	1521	700 AA A
TP50753700	215/55R17	94V	BSW	26.4	8.9	6.0-(7.0)-7.5	10/32	1477	700 AA A
TP02308100	215/60R17	100V XL	BSW	27.2	8.7	6.0-(6.5)-7.5	10/32	1764	700 AA A
TP42418000	215/65R17	99V	BSW	28.0	8.7	6.0-(6.5)-7.5	10/32	1709	700 AA A
TP00225000	225/45R17	91V	BSW	24.9	8.9	7.0-(7.5)-8.5	10/32	1356	700 AA A
TP50718500	225/50R17	94V	BSW	26.0	9.1	6.0-(7.0)-8.0	10/32	1477	700 AA A
TP00301300	225/55R17	101V XL	BSW	26.9	9.0	6.0-(7.0)-8.0	10/32	1819	700 AA A
TP41116100	225/60R17	99H	BSW	27.7	9.1	6.0-(6.5)-8.0	10/32	1709	700 AA A
TP00003800	225/65R17	106V XL	BSW	28.7	9.2	6.0-(6.5)-8.0	10/32	2094	700 AA A
TP42011500	235/45ZR17	94W	BSW	25.3	9.4	7.5-(8.0)-9.0	10/32	1477	700 AA A
TP42003700	235/50R17	100V XL	BSW	26.4	9.4	6.5-(7.5)-8.5	10/32	1764	700 AA A
TP00003000	235/55R17	103V XL	BSW	27.2	9.4	6.5-(7.5)-8.5	10/32	1929	700 AA A
TP00002600	235/60R17	106V XL	BSW	28.1	9.5	6.5-(7.0)-8.5	10/32	2094	700 AA A
TP00002400	235/65R17	108V XL	BSW	29.0	9.4	6.5-(7.0)-8.5	10/32	2205	700 AA A

BRAVO HP-M3 continued

PART #	SIZE	Service Description	Sidewall	Overall Diameter (in.)	Section Width (in.)	APPROVED Rim Width (in.)	Tread Depth (in.)	Max Load (lbs)	UTQG
TP00074100	245/40R17	95V XL	BSW	24.8	9.8	8.0-(8.5)-9.5	9/32	1521	700 A A
TP00077100	245/45R17	99V XL	BSW	25.6	9.6	7.5-(8.0)-9.0	10/32	1709	700 A A
TP00010700	245/65R17	111V XL	BSW	29.7	9.9	7.0-(7.0)-8.5	10/32	2403	700 A A
TP00088200	255/40R17	98V XL	BSW	25.1	10.2	8.5-(9.0)-10.0	10/32	1653	700 A A
TP43127000	215/45ZR18	93W XL	BSW	25.7	8.4	7.0-(7.0)-8.0	10/32	1433	700 A A
TP02311100	215/55R18	99V XL	BSW	27.3	8.9	6.0-(7.0)-7.5	10/32	1709	700 A A
TP00121700	225/40ZR18	92W XL	BSW	25.1	9.2	7.5-(8.0)-9.0	10/32	1389	700 A A
TP01691200	225/45ZR18	95W XL	BSW	26.0	8.9	7.0-(7.5)-8.5	10/32	1521	700 A A
TP50809000	225/50ZR18	99W XL	BSW	27.0	9.0	6.0-(7.0)-8.0	10/32	1709	700 A A
TP00791500	225/55R18	98V	BSW	27.7	9.0	6.0-(7.0)-8.0	10/32	1653	700 A A
TP43028900	225/60ZR18	100W	BSW	28.8	9.1	6.0-(6.5)-8.0	10/32	1764	700 A A
TP00088800	235/40ZR18	95W XL	BSW	25.4	9.6	8.0-(8.5)-9.5	10/32	1521	700 A A
TP00906500	235/45ZR18	94W	BSW	26.4	9.4	7.5-(8.0)-9.0	10/32	1477	700 A A
TP00653700	235/50ZR18	101W XL	BSW	27.4	9.4	6.5-(7.5)-8.5	10/32	1819	700 A A
TP00032000	235/55R18	100V	BSW	28.1	9.6	6.5-(7.5)-8.5	10/32	1764	700 A A
TP02313100	235/60R18	107V XL	BSW	29.1	9.6	6.5-(7.0)-8.5	10/32	2149	700 A A
TP02312100	235/65R18	110V XL	BSW	30.2	9.7	6.5-(7.0)-8.5	10/32	2337	700 A A
TP00075100	245/40ZR18	97W XL	BSW	25.7	9.7	8.0-(8.5)-9.5	10/32	1609	700 A A
TP01047400	245/45R18	100V XL	BSW	26.8	9.3	7.5-(8.0)-9.0	10/32	1764	700 A A
TP00074400	245/55ZR18	103W	BSW	28.6	9.8	7.0-(7.5)-8.5	10/32	1929	700 A A
TP00004800	245/60R18	105V	BSW	29.6	9.8	7.0-(7.0)-8.5	10/32	2039	700 A A
TP00172200	255/35ZR18	94W XL	BSW	25.0	10.2	8.5-(9.0)-10.0	10/32	1477	700 A A
TP00088700	255/40ZR18	99W XL	BSW	26.1	10.2	8.5-(9.0)-10.0	10/32	1709	700 A A
TP00074300	255/45ZR18	103W XL	BSW	27.1	10.1	8.0-(8.5)-9.5	10/32	1929	700 A A
TP00003900	255/55R18	109V XL	BSW	28.9	10.4	7.0-(8.0)-9.0	10/32	2271	700 A A
TP00014200	255/65R18	115V XL	BSW	31.1	10.5	7.0-(7.5)-9.0	10/32	2679	700 A A
TP00001600	265/60R18	114V XL	BSW	30.6	10.8	7.5-(8.0)-9.5	10/32	2601	700 A A
TP00074800	225/40ZR19	93W XL	BSW	26.1	9.1	7.5-(8.0)-9.0	10/32	1433	700 A A
TP00074700	225/45ZR19	96W XL	BSW	27.0	8.9	7.0-(7.5)-8.5	10/32	1565	700 A A
TP00004500	225/55R19	99V	BSW	28.7	9.2	6.0-(7.0)-8.0	10/32	1709	700 A A
TP00085600	235/40ZR19	96W XL	BSW	26.5	9.6	8.0-(8.5)-9.5	10/32	1565	700 A A
TP00088300	235/50ZR19	103W XL	BSW	28.5	9.6	6.5-(7.5)-8.5	10/32	1929	700 A A
TP43154200	235/55R19	101V	BSW	29.3	9.5	6.5-(7.5)-8.5	10/32	1819	700 A A
TP01992100	245/40ZR19	98W XL	BSW	26.7	9.7	8.0-(8.5)-9.5	10/32	1653	700 A A
TP02010100	245/45ZR19	98W	BSW	27.6	9.6	7.5-(8.0)-9.0	10/32	1653	700 A A
TP00003500	245/55R19	103V	BSW	29.7	9.8	7.0-(7.5)-8.5	10/32	1929	700 A A
TP00088600	255/40ZR19	100W XL	BSW	27.2	10.1	8.5-(9.0)-10.0	10/32	1764	700 A A
TP00074900	255/45ZR19	104W XL	BSW	28.1	10.0	8.0-(8.5)-9.5	10/32	1984	700 A A
TP02314100	255/50R19	107V XL	BSW	29.2	10.2	7.0-(8.0)-9.0	10/32	2149	700 A A
TP00073900	255/55ZR19	111W XL	BSW	30.0	10.3	7.0-(8.0)-9.0	10/32	2403	700 A A
TP00004000	255/60R19	113V XL	BSW	31.1	10.4	7.0-(7.5)-9.0	10/32	2535	700 A A
TP00088500	275/40ZR19	105W XL	BSW	27.8	10.8	9.0-(9.5)-11.0	10/32	2039	700 A A
TP00004700	235/55R20	105V XL	BSW	30.1	9.5	6.5-(7.5)-8.5	10/32	2039	700 A A
TP00074600	245/40ZR20	99W XL	BSW	27.8	9.7	8.0-(8.5)-9.5	10/32	1709	700 A A
TP02004100	245/45ZR20	99W	BSW	28.7	9.5	7.5-(8.0)-9.0	10/32	1709	700 A A
TP00005900	245/50R20	102V	BSW	29.9	9.7	7.0-(7.5)-8.5	9/32	1874	700 A A
TP02317100	255/45ZR20	105W XL	BSW	28.9	10.2	8.0-(8.5)-9.5	10/32	2039	700 A A
TP00012200	255/50R20	109V XL	BSW	30.1	10.3	7.0-(8.0)-9.0	10/32	2271	700 A A
TP00015500	255/55R20	110V XL	BSW	31.1	10.4	7.0-(8.0)-9.0	10/32	2337	700 A A
TP00002900	265/50R20	111V XL	BSW	30.4	10.7	7.5-(8.5)-9.5	10/32	2403	700 A A
TP00088400	275/40ZR20	106W XL	BSW	28.8	10.8	9.0-(9.5)-11.0	10/32	2094	700 A A
TP00094400	275/45ZR20	110W XL	BSW	29.7	10.8	8.5-(9.0)-10.5	10/32	2337	700 A A

MA-202



PART #	SIZE	Service Description	Sidewall	Overall Diameter (in.)	Section Width (in.)	APPROVED Rim Width (in.)	Tread Depth (in.)	Max Load (lbs)	UTQG
TP09788600	155/80R12	77T	BSW	21.9	6.3	4.0-(4.5)-5.0	10/32	915	280 A A
TP33152800	155/80R13	79T	BSW	22.8	6.3	4.0-(4.5)-5.0	10/32	963	280 A A
TP12377500	165/70R13	79T	BSW	22.3	6.8	4.0-(5.0)-5.5	10/32	963	400 A A
TP34008000	165/80R13	83T	BSW	23.5	6.6	4.0-(4.5)-5.5	10/32	1074	280 A A
TP20541400	175/70R13	82T	BSW	22.8	6.9	4.5-(5.0)-6.0	10/32	1047	400 A A
TP23077400	185/70R13	86T	BSW	23.4	7.5	4.5-(5.5)-6.0	10/32	1168	400 A A
TP15703200	175/65R14	82T	BSW	22.9	7.0	5.0-(5.0)-6.0	10/32	1047	400 A A
TP15902100	175/70R14	84T	BSW	23.9	6.9	4.5-(5.0)-6.0	10/32	1102	400 A A
TP16025800	185/60R14	82H	BSW	22.8	7.3	5.0-(5.5)-6.5	10/32	1047	400 A A
TP17634400	185/65R14	86H	BSW	23.4	7.4	5.0-(5.5)-6.5	10/32	1168	400 A A
TP23556800	185/70R14	88T	BSW	24.5	7.6	4.5-(5.5)-6.0	10/32	1235	400 A A
TP18005300	195/60R14	86H	BSW	23.2	7.9	5.5-(6.0)-7.0	10/32	1168	400 A A
TP23902800	195/65R14	89H	BSW	23.9	8.0	5.5-(6.0)-7.0	10/32	1279	400 A A
TP24579400	195/70R14	91T	BSW	25.2	8.1	5.0-(6.0)-6.5	10/32	1356	400 A A
TP39158600	205/70R14	95T	BSW	25.5	8.4	5.0-(6.0)-7.0	10/32	1521	400 A A
TP18293200	185/60R15	84H	BSW	23.7	7.3	5.0-(5.5)-6.5	10/32	1102	400 A A
TP18314500	185/65R15	88H	BSW	24.5	7.4	5.0-(5.5)-6.5	10/32	1235	400 A A
TP38002400	195/60R15	88H	BSW	24.2	7.9	5.5-(6.0)-7.0	10/32	1235	400 A A
TP23956900	195/65R15	91H	BSW	24.9	8.0	5.5-(6.0)-7.0	10/32	1356	400 A A
TP38062200	205/60R15	91T	BSW	24.7	8.1	5.5-(6.0)-7.5	10/32	1356	400 A A
TP15765900	205/65R15	94T	BSW	25.4	8.3	5.5-(6.0)-7.5	10/32	1477	400 A A
TP18451800	215/60R15	94T	BSW	25.2	8.7	6.0-(6.5)-7.5	10/32	1477	400 A A
TP39404700	215/65R15	96H	BSW	26.0	8.8	6.0-(6.5)-7.5	10/32	1565	400 A A
TP00137900	205/55R16	90H	BSW	25.0	8.4	5.5-(6.5)-7.5	10/32	1323	400 A A
TP39720300	215/55R16	93H	BSW	25.3	9.0	6.0-(7.0)-7.5	10/32	1433	400 A A
TP40908800	215/60R16	95T	BSW	26.1	8.7	6.0-(6.5)-7.5	10/32	1521	400 A A
TP40978300	215/65R16	98T	BSW	27.0	8.8	6.0-(6.5)-7.5	10/32	1653	400 A A
TP40993100	225/60R16	98S	RWW	26.6	8.9	6.0-(6.5)-8.0	10/32	1653	400 A A
TP40996600	225/60R16	98T	RBL	26.6	8.9	6.0-(6.5)-8.0	10/32	1653	400 A B

BRAVO HT-770



PART #	SIZE	Service Description	Sidewall	Overall Diameter (in.)	Section Width (in.)	APPROVED Rim Width (in.)	Tread Depth (in.)	Max Load (lbs)	UTQG
TP00312900	235/70R15	107S XL	OBL	27.9	9.4	6.0-(7.0)-8.0	12/32	2149	640 A B
TP00313000	235/75R15	109S XL	OBL	28.8	9.5	6.0-(6.5)-8.0	12/32	2271	640 A B
TP00311900	215/70R16	100T	OBL	28.0	8.7	5.5-(6.5)-7.0	12/32	1764	640 A B
TP00311500	225/70R16	107T XL	OBL	28.6	9.0	6.0-(6.5)-7.5	12/32	2149	640 A B
TP00098900	225/75R16	104T	BSW	29.3	8.7	6.0-(6.0)-7.5	12/32	1984	640 A B
TP00319200	235/65R16	107T XL	OBL	28.0	9.5	6.5-(7.0)-8.5	12/32	2149	640 A B
TP00311600	235/70R16	106T	OBL	28.9	9.5	6.0-(7.0)-8.0	12/32	2094	640 A B
TP00313300	235/75R16	112S XL	OBL	29.9	9.4	6.0-(6.5)-8.0	12/32	2469	640 A B
TP00312400	245/70R16	111S XL	OBL	29.4	9.8	6.5-(7.0)-8.0	12/32	2403	640 A B
TP00313700	245/75R16	111S	OBL	30.4	9.8	6.5-(7.0)-8.0	12/32	2403	640 A B
TP00312500	255/70R16	111S	OBL	30.0	10.2	6.5-(7.5)-8.5	12/32	2403	640 A B
TP00312100	265/70R16	112S	OBL	30.6	10.6	7.0-(8.0)-9.0	12/32	2469	640 A B
TP00313600	265/75R16	116T	OBL	31.5	10.4	7.0-(7.5)-9.0	12/32	2756	640 A B
TP00313200	225/65R17	102H	OBL	28.7	8.8	6.0-(6.5)-8.0	12/32	1874	640 A B
TP00313500	235/65R17	104H	OBL	29.1	9.5	6.5-(7.0)-8.5	12/32	1984	640 A B
TP00319100	235/70R17	111S XL	OBL	30.0	9.4	6.0-(7.0)-8.0	12/32	2403	640 A B
TP00313800	235/75R17	109S	OBL	31.0	9.3	6.0-(6.5)-8.0	12/32	2271	640 A B
TP00312700	245/65R17	111H XL	OBL	29.6	9.7	7.0-(7.0)-8.5	12/32	2403	640 A B

BRAVO HT-770 continued

PART #	SIZE	Service Description	Sidewall	Overall Diameter (in.)	Section Width (in.)	APPROVED Rim Width (in.)	Tread Depth (in.)	Max Load (lbs)	UTQG
TP00312600	245/70R17	110S	OBL	30.4	9.7	6.5-(7.0)-8.0	12/32	2337	640 A B
TP00099000	245/75R17	112T	BSW	31.5	9.6	6.5-(7.0)-8.0	12/32	2469	640 A B
TP00313100	255/65R17	110S	OBL	30.2	10.1	7.0-(7.5)-9.0	12/32	2337	640 A B
TP00312800	255/70R17	112S	OBL	31.1	10.2	6.5-(7.5)-8.5	12/32	2469	640 A B
TP00311400	265/65R17	112S	OBL	30.6	10.6	7.5-(8.0)-9.5	12/32	2469	640 A B
TP00312000	265/70R17	115T	OBL	31.5	10.6	7.0-(8.0)-9.0	12/32	2679	640 A B
TP00313400	275/60R17	110S	OBL	30.0	10.9	7.5-(8.0)-9.5	12/32	2337	640 A B
TP00120000	255/70R18	113S	BSW	32.0	10.0	6.5-(7.5)-8.5	12/32	2535	640 A B
TP00312200	265/60R18	114H XL	OBL	30.6	10.6	7.5-(8.0)-9.5	12/32	2601	640 A B
TP00120200	265/65R18	114H	BSW	31.6	10.4	7.5-(8.0)-9.5	12/32	2601	640 A B
TP00120300	265/70R18	116H	BSW	32.6	10.7	7.0-(8.0)-9.0	12/32	2756	640 A B
TP00312300	275/65R18	116T	OBL	32.2	10.9	7.5-(8.0)-9.5	12/32	2756	640 A B
TP00311800	275/55R20	117H XL	OBL	31.9	11.3	7.5-(8.5)-9.5	12/32	2833	640 A B
TP00311700	275/60R20	115T	OBL	33.0	10.9	7.5-(8.0)-9.5	12/32	2679	640 A B
									(psi)
TL00088700	LT225/75R16	115/112S	OBL	29.2	9.0	6.0-(6.0)-7.5	13/32	S2680/D2470	80
TL00088900	LT235/85R16*	120/116S	OBL	31.7	9.4	6.0-(6.5)-7.5	15/32	S3042/D2778	80
TL00088600	LT245/75R16	120/116S	OBL	30.4	9.8	6.5-(7.0)-8.0	15/32	S3040/D2780	80
TL00089500	LT265/75R16*	123/120S	OBL	31.6	10.6	7.0-(7.5)-9.0	15/32	S3415/D3085	80
TL00033700	LT225/75R17	116/113R	BSW	30.3	8.7	6.0-(6.0)-7.5	13/32	S2755/D2535	80
TL00088800	LT235/80R17*	120/117S	OBL	31.8	9.0	6.0-(6.5)-8.0	15/32	S3085/D2835	80
TL00089600	LT245/70R17*	119/116S	OBL	30.6	9.5	6.5-(7.0)-8.0	15/32	S3000/D2755	80
TL00033800	LT245/75R17*	121/118S	BSW	31.5	9.6	6.5-(7.0)-8.0	15/32	S3195/D2910	80
TL00089000	LT265/70R17*	121/118S	OBL	31.6	10.6	7.0-(8.0)-9.0	15/32	S3195/D2910	80
TL00033900	LT265/70R18*	124/121S	BSW	32.7	10.6	7.0-(8.0)-9.0	15/32	S3525/D3195	80
TL00040600	LT275/65R18*	123/120S	BSW	32.1	11.0	8.0-(8.0)-9.5	15/32	S3415/D3085	80
TL00036700	LT265/60R20	121/118R	BSW	32.7	10.6	8.0-(8.0)-9.5	15/32	S3195/D2910	80
TL00040700	LT275/65R20	126/123R	BSW	34.3	11.0	8.0-(8.0)-9.5	15/32	S3750/D3415	80

BRAVO AT-771

PART #	SIZE	Service Description	Sidewall	Overall Diameter (in.)	Section Width (in.)	APPROVED Rim Width (in.)	Tread Depth (in.)	Max Load (lbs)	UTQG
TP27033300	235/75R15	109S XL	OWL	29.0	9.4	6.0-(6.5)-8.0	12/32	2271	500 A B
TP39235000	255/70R15	108T	OWL	29.0	10.3	6.5-(7.5)-8.5	12/32	2205	500 A B
TP41015200	235/60R16	104H XL	BSW	27.2	9.3	6.5-(7.0)-8.5	12/32	1984	500 A A
TP41083900	245/70R16	107T	OWL	29.4	9.8	6.5-(7.0)-8.0	12/32	2149	500 A B
TP41225200	255/65R16	109T	OWL	29.1	10.2	7.0-(7.5)-9.0	12/32	2271	500 A B
TP00022200	265/70R16	112T	OWL	30.6	10.7	7.0-(8.0)-9.0	12/32	2469	500 A B
TP00308900	265/75R16	116T	OBL	31.8	10.4	7.0-(7.5)-9.0	12/32	2756	500 A B
TP25715800	225/65R17	102T	OWL	28.5	9.0	6.0-(6.5)-8.0	12/32	1874	500 A B
TP42446800	235/65R17	104T	OWL	29.1	9.4	6.5-(7.0)-8.5	12/32	1984	500 A B
TP37101000	245/65R17	111S XL	OWL	29.6	9.8	7.0-(7.0)-8.5	12/32	2403	500 A B
TP41492000	255/65R17	110H	BSW	30.1	10.2	7.0-(7.5)-9.0	12/32	2337	500 A A
TP41106400	265/65R17	112T	OWL	30.5	10.8	7.5-(8.0)-9.5	12/32	2469	500 A B
TP41304400	265/70R17	115S	OWL	31.6	10.9	7.0-(8.0)-9.0	12/32	2679	500 A B
TP42498200	275/65R17	115T	OWL	31.1	11.0	7.5-(8.0)-9.5	12/32	2679	500 A B
TP00028400	275/65R18	116S	BSW	32.3	10.8	7.5-(8.0)-9.5	12/32	2756	500 A A
TP00028300	275/55R20	117T XL	BSW	31.9	11.0	7.5-(8.5)-9.5	12/32	2833	500 A B
TP00030500	275/60R20	115S	BSW	33.0	10.9	7.5-(8.0)-9.5	12/32	2679	500 A B
TL16001900	LT235/75R15	104/101S	OWL	28.8	9.5	6.0-(6.5)-8.0	13/32	S1985/D1820	50
TL30171800	LT225/75R16	115/112Q	OWL	29.3	9.1	6.0-(6.0)-7.5	13/32	S2680/D2470	80

BRAVO AT-771 continued



SPECIFICATIONS

PART #	SIZE	Service Description	Sidewall	Overall Diameter (in.)	Section Width (in.)	APPROVED Rim Width (in.)	Tread Depth (in.)	Max Load (lbs)	Max Infl. Pressure (psi)
TL30179000	LT235/85R16*	120/116S	OWL	31.8	9.4	6.0-(6.5)-7.5	15/32	S3085/D2755	83
TL30191600	LT245/75R16*	120/116Q	OWL	30.5	10.0	6.5-(7.0)-8.0	15/32	S3042/D2778	80
TL28605000	LT265/70R16	117/114S	OWL	30.7	10.6	7.0-(8.0)-9.0	15/32	S2835/D2600	65
TL30218800	LT265/75R16	119/116Q	OWL	31.6	10.8	7.0-(7.5)-9.0	15/32	S3000/D2755	65
TL30218900	LT265/75R16*	123/120Q	OWL	31.6	10.9	7.0-(7.5)-9.0	15/32	S3415/D3085	80
TL30272300	LT285/75R16	122/119R	OWL	32.7	11.7	7.5-(8.0)-9.5	16/32	S3305/D3000	65
TL30272400	LT285/75R16*	126/123Q	OWL	32.8	11.5	7.5-(8.0)-9.5	16/32	S3750/D3415	80
TL37202200	LT235/80R17*	120/117R	OWL	31.8	9.2	6.0-(6.5)-8.0	15/32	S3085/D2835	80
TL00088200	LT245/75R17*	121/118S	OBL	31.6	9.8	6.5-(7.0)-8.0	15/32	S3195/D2910	80
TL37309400	LT265/70R17*	121/118R	OWL	31.7	10.9	7.0-(8.0)-9.0	15/32	S3195/D2910	80
TL37312000	LT285/70R17	121/118R	OWL	32.6	11.4	7.5-(8.5)-9.5	16/32	S3195/D2910	65
TL37506000	LT315/70R17	121/118R	OWL	34.3	12.8	8.0-(9.5)-10.5	16/32	S3195/D2910	50
TL37620800	LT275/65R18*	123/120S	OWL	32.1	11.1	8.0-(8.0)-9.5	15/32	S3415/D3085	80
TL00013200	LT275/70R18*	125/122S	BSW	33.2	10.8	7.0-(8.0)-9.0	15/32	S3640/D3305	80
TL37833000	LT285/65R18*	125/122R	OWL	32.6	11.5	8.5-(8.5)-10.0	16/32	S3640/D3305	80
TL00376100	LT305/55R20*	121/118S	BSW	33.4	12.3	9.0-(9.5)-11.0	15/32	S3195/D2910	65
TL00401100	LT325/60R20*	126/123S	BSW	35.3	12.8	9.5-(9.5)-11.5	15/32	S3750/D3415	65
TL18524200	30X9.50R15LT	104S	OWL	29.6	9.6	6.0-(7.5)-8.0	15/32	1985	50
TL18542600	31X10.50R15LT	109S	OWL	30.4	10.7	7.0-(8.5)-9.0	15/32	2270	50

RAZR HT



PART #	SIZE	Service Description	Sidewall	Overall Diameter (in.)	Section Width (in.)	APPROVED Rim Width (in.)	Tread Depth (in.)	Max Load (lbs)	UTQG
TP00442200	235/75R15	109T XL	BSW	29.0	9.2	6.0-(6.5)-8.0	12/32	2271	700 A B
TP00368200	215/70R16	100H	BSW	28.1	8.8	5.5-(6.5)-7.0	12/32	1764	700 A A
TP00386600	225/70R16	103T	BSW	28.6	9.0	6.0-(6.5)-7.5	12/32	1929	700 A B
TP00377700	235/70R16	109T XL	BSW	29.2	9.4	6.0-(7.0)-8.0	12/32	2271	700 A B
TP00377200	245/70R16	111T XL	BSW	29.7	9.8	6.5-(7.0)-8.0	12/32	2403	700 A B
TP00442100	245/75R16	111T	BSW	30.6	9.8	6.5-(7.0)-8.0	12/32	2403	700 A B
TP00385900	255/70R16	111T	BSW	30.2	10.2	6.5-(7.5)-8.5	12/32	2403	700 A B
TP00377800	265/70R16	112T	BSW	30.7	10.8	7.0-(8.0)-9.0	12/32	2469	700 A B
TP00441900	265/75R16	116T	BSW	31.9	10.5	7.0-(7.5)-9.0	12/32	2756	700 A B
TP00386700	275/70R16	114T	BSW	31.3	11.0	7.0-(8.0)-9.0	12/32	2601	700 A B
TP00377500	225/65R17	102H	BSW	28.7	8.9	6.0-(6.5)-8.0	12/32	1874	700 A A
TP00386800	235/65R17	108H XL	BSW	29.3	9.4	6.5-(7.0)-8.5	12/32	2205	700 A A
TP00441800	235/75R17	109T	BSW	31.0	9.2	6.0-(6.5)-8.0	12/32	2271	700 A B
TP00377600	245/65R17	111H XL	BSW	29.7	9.6	7.0-(7.0)-8.5	12/32	2403	700 A A
TP00385500	245/70R17	110T	BSW	30.7	9.7	6.5-(7.0)-8.0	12/32	2337	700 A B
TP00441700	255/70R17	112T	BSW	31.3	10.3	6.5-(7.5)-8.5	11/32	2469	700 A B
TP00377400	265/65R17	112T	BSW	30.8	10.7	7.5-(8.0)-9.5	12/32	2469	700 A B
TP00363200	265/70R17	115T	BSW	31.9	11.0	7.0-(8.0)-9.0	12/32	2679	700 A B
TP00427000	225/60R18	100H	BSW	28.7	8.8	6.0-(6.5)-8.0	12/32	1764	700 A A
TP00441600	235/65R18	110H XL	BSW	30.2	9.3	6.5-(7.0)-8.5	11/32	2337	700 A A
TP00376200	245/60R18	105H	BSW	29.7	9.7	7.0-(7.0)-8.5	12/32	2039	700 A A
TP00385600	255/65R18	115H XL	BSW	31.2	10.2	7.0-(7.5)-9.0	12/32	2679	700 A A
TP00377300	265/60R18	114H XL	BSW	30.6	10.6	7.5-(8.0)-9.5	12/32	2601	700 A A
TP00441500	265/65R18	114H	BSW	31.6	10.7	7.5-(8.0)-9.5	12/32	2601	700 A A
TP00385700	275/65R18	116H	BSW	32.3	11.1	7.5-(8.0)-9.5	12/32	2756	700 A A
TP00386200	285/60R18	116T	BSW	31.5	11.3	8.0-(8.5)-10.0	12/32	2756	700 A B
TP00368000	245/55R19	103H	BSW	29.8	10.0	7.0-(7.5)-8.5	12/32	1929	700 A A
TP00441400	265/50R20	111T XL	BSW	30.4	10.7	7.5-(8.5)-9.5	12/32	2403	700 A B

*3-ply construction; XL - Extra Load; BSW - Black Sidewall; OWL - Outline White Lettering; TBD - To Be Determined

RAZR HT continued

PART #	SIZE	Service Description	Sidewall	Overall Diameter (in.)	Section Width (in.)	APPROVED Rim Width (in.)	Tread Depth (in.)	Max Load (lbs)	Max Infl. Pressure (psi)
TP00368100	275/55R20	117H XL	BSW	32.1	11.1	7.5-(8.5)-9.5	12/32	2833	700 A A
TP00385800	275/60R20	115H	BSW	33.2	10.9	7.5-(8.0)-9.5	12/32	2679	700 A A
TP00368300	285/50R20	112V	BSW	31.4	11.6	8.0-(9.0)-10.0	12/32	2469	700 A A
									(psi)
TL00114800	LT225/75R16	115/112S 10PR	BSW	29.4	8.7	6.0-(6.0)-7.5	13/32	S2680/D2470	80
TL00114900	LT235/85R16	120/116S 10PR	BSW	31.8	9.4	6.0-(6.5)-7.5	14/32	S3042/D2778	80
TL00115000	LT245/75R16	120/116S 10PR	BSW	30.5	9.8	6.5-(7.0)-8.0	13/32	S3042/D2778	80
TL00128800	LT235/80R17	120/117R	BSW	31.9	9.3	6.0-(6.5)-8.0	15/32	S3085/D2835	80
TL00128900	LT265/70R17	123/120T	BSW	31.8	10.7	7.0-(8.0)-9.0	15/32	S3415/D3085	80

RAZR AT-S

PART #	SIZE	Service Description	Sidewall	Overall Diameter (in.)	Section Width (in.)	APPROVED Rim Width (in.)	Tread Depth (in.)	Max Load (lbs)	UTQG
TP00420900	235/75R15	109T XL	OWL	29.0	9.4	6.0-(6.5)-8.0	12/32	2271	660 A B
TP00420700	245/70R16	111T XL	OWL	29.6	9.8	6.5-(7.0)-8.0	13/32	2403	660 A B
TP00420600	255/70R16	111T	RBL	30.1	10.0	6.5-(7.5)-8.5	13/32	2403	660 A B
TP00420300	265/70R16	112T	OWL	30.8	10.7	7.0-(8.0)-9.0	13/32	2469	660 A B
TP00420500	225/65R17	102T	RBL	28.5	9.0	6.0-(6.5)-8.0	13/32	1874	660 A B
TP00421300	245/65R17	111T XL	RBL	29.8	9.8	7.0-(7.0)-8.5	12/32	2403	660 A B
TP00436800	255/70R17	112T	RBL	31.2	10.4	6.5-(7.5)-8.5	13/32	2469	660 A B
TP00391800	265/65R17	112T	RBL	30.7	10.9	7.5-(8.0)-9.5	11/32	2469	660 A B
TP00420800	265/60R18	114T XL	OWL	30.5	10.8	7.5-(8.0)-9.5	13/32	2601	660 A B
TP00421500	275/55R20	117T XL	RBL	32.1	11.0	7.5-(8.5)-9.5	12/32	2833	660 A B
TL00127500	LT265/65R17	120/117S 10PR	RBL	30.6	10.8	8.0-(8.0)-9.5	15/32	S3085/D2835	80
TL00149000	LT265/70R17	123/120S 10PR	RBL	31.7	10.8	7.0-(8.0)-9.0	15/32	S3415/D3085	80
TL00127400	LT285/70R17	126/123S 10PR	RBL	33.0	11.4	7.5-(8.5)-9.5	15/32	S3750/D3415	80
TL00123300	31X10.50R15LT	109S 6PR	OWL	30.4	10.9	7.0-(8.5)-9.0	15/32	2270	50

RAZR AT

PART #	SIZE	Service Description	Sidewall	Overall Diameter (in.)	Section Width (in.)	APPROVED Rim Width (in.)	Tread Depth (in.)	Max Load (lbs)	UTQG
TP00405600	245/75R16	115S XL	RBL	30.4	9.9	6.5-(7.5)-8.0	12/32	2679	600 A B
TP00405200	255/70R16	111T	RBL	30.1	10.0	6.5-(7.5)-8.5	12/32	2403	600 A B
TP00251600	265/70R16	112T	RBL	30.7	10.7	7.0-(8.0)-9.0	12/32	2469	600 A B
TP00405700	265/75R16	116T	RBL	31.6	10.5	7.0-(7.5)-9.0	12/32	2756	600 A B
TP00250800	225/60R17	103H XL	RBL	27.8	8.8	6.0-(6.5)-8.0	12/32	1929	600 A B
TP00251000	225/65R17	106H XL	RBL	28.7	8.8	6.0-(6.5)-8.0	12/32	2094	600 A B
TP00250600	235/65R17	108H XL	RBL	29.3	9.3	6.5-(7.0)-8.5	12/32	2205	600 A B
TP00251800	245/65R17	111T XL	RBL	29.8	9.6	7.0-(7.0)-8.5	12/32	2403	600 A B
TP00250700	265/65R17	112T	RBL	30.8	10.6	7.5-(8.0)-9.5	12/32	2469	600 A B
TP00250900	265/70R17	116T XL	RBL	31.8	10.6	7.0-(8.0)-9.0	12/32	2756	600 A B
TP00251700	P285/70R17	117T	RBL	32.6	11.6	7.5-(8.5)-9.5	12/32	2833	600 A B
TP00405300	255/70R18	116T XL	RBL	32.1	10.3	6.5-(7.5)-8.5	12/32	2756	600 A B
TP00405500	265/60R18	110T	RBL	30.3	10.7	7.5-(8.0)-9.5	12/32	2337	600 A B
TP00405100	265/65R18	114T	RBL	31.6	10.7	7.5-(8.0)-9.5	12/32	2601	600 A B
TP00405400	275/65R18	116T	RBL	32.1	11.1	7.5-(8.0)-9.5	12/32	2756	600 A B
TP00251900	265/50R20	111S XL	RBL	30.5	10.6	7.5-(8.5)-9.5	12/32	2403	600 A B
TP00252000	275/55R20	117T XL	RBL	32.0	11.1	7.5-(8.5)-9.5	12/32	2833	600 A B
TP00252100	275/60R20	116S XL	RBL	33.2	10.8	7.5-(8.0)-9.5	12/32	2756	600 A B

RAZR AT continued



SPECIFICATIONS

PART #	SIZE	Service Description	Sidewall	Overall Diameter (in.)	Section Width (in.)	APPROVED Rim Width (in.)	Tread Depth (in.)	Max Load (lbs)	Max Infl. Pressure (psi)
TL00068000	LT245/75R16*	120/116S 10PR	RBL	30.6	10.0	6.5-(7.0)-8.0	15/32	S3042/D2778	80
TL00065000	LT265/70R16*	121/118S 10PR	RBL	30.7	10.9	7.0-(8.0)-9.0	15/32	S3195/D2910	80
TL00066700	LT265/75R16*	123/120R 10PR	RBL	31.7	10.8	7.0-(7.5)-9.0	15/32	S3415/D3085	80
TL00068900	LT285/75R16*	126/123R 10PR	RBL	32.9	11.5	7.5-(8.0)-9.5	15/32	S3750/D3415	80
TL00119900	LT245/75R17*	121/118S 10PR	RBL	31.6	9.8	6.5-(7.0)-8.0	15/32	S3195/D2910	80
TL00064800	LT265/65R17*	120/117S 10PR	RBL	30.6	10.8	8.0-(8.0)-9.5	15/32	S3085/D2835	80
TL00002500	LT265/70R17*	121/118S 10PR	RBL	31.8	10.8	7.0-(8.0)-9.0	15/32	S3195/D2910	80
TL00049200	LT285/70R17*	121/118S 10PR	RBL	32.9	11.7	7.5-(8.5)-9.5	15/32	S3195/D2910	80
TL00049600	LT295/70R17*	121/118R 10PR	RBL	33.5	12.2	7.5-(8.5)-10.0	15/32	S3195/D2910	80
TL00064600	LT265/60R18*	119/116S 10PR	RBL	30.8	10.8	8.0-(8.0)-9.5	15/32	S3000/D2755	80
TL00049500	LT265/70R18*	124/121S 10PR	RBL	32.9	10.9	7.0-(8.0)-9.0	15/32	S3525/D3195	80
TL00068300	LT275/65R18*	123/120S 10PR	RBL	32.4	10.9	8.0-(8.0)-9.5	15/32	S3415/D3085	80
TL00049400	LT275/70R18*	125/122S 10PR	RBL	33.3	11.1	7.0-(8.0)-9.0	15/32	S3640/D3305	80
TL00070300	LT285/65R18*	125/122S 10PR	RBL	32.8	11.5	8.5-(8.5)-10.0	15/32	S3640/D3305	80
TL00070200	LT285/75R18*	129/126S 10PR	RBL	35.0	11.5	7.5-(8.0)-9.5	15/32	S4080/D3750	80
TL00049300	LT295/70R18*	129/126S 10PR	RBL	34.5	12.0	7.5-(8.5)-10.0	15/32	S4080/D3750	80
TL00070100	LT265/60R20*	121/118S 10PR	RBL	32.8	10.8	8.0-(8.0)-9.5	15/32	S3195/D2910	80
TL00121600	LT275/55R20*	120/117T 10PR	RBL	32.0	10.9	8.0-(8.5)-9.5	15/32	S3085/D2835	80
TL00070000	LT275/60R20*	123/120S 10PR	RBL	33.6	11.0	8.0-(8.0)-9.5	15/32	S3415/D3085	80
TL00069900	LT275/65R20*	126/123S 10PR	RBL	34.2	11.1	8.0-(8.0)-9.5	15/32	S3750/D3415	80
TL00069800	LT285/55R20*	122/119S 10PR	RBL	32.7	11.5	8.5-(9.0)-10.0	15/32	S3305/D3000	80
TL00069700	LT285/65R20*	127/124S 10PR	RBL	34.7	11.6	8.5-(8.5)-10.0	15/32	S3860/D3525	80
TL00069100	LT295/55R20*	123/120S 10PR	RBL	33.0	12.0	8.5-(9.5)-10.5	15/32	S3415/D3085	80
TL00069600	LT295/60R20*	126/123S 10PR	RBL	34.6	11.8	8.5-(8.5)-10.5	15/32	S3750/D3415	80
TL00069500	LT295/65R20*	129/126S 10PR	RBL	35.2	11.9	8.5-(8.5)-10.5	15/32	S4080/D3750	80
TL00121700	LT305/55R20*	121/118S 10PR	RBL	33.1	12.4	9.0-(9.5)-11.0	15/32	S3195/D2910	80
TL00069400	LT285/50R22*	121/118R 10PR	RBL	33.7	11.4	8.5-(9.0)-10.0	15/32	S3195/D2910	80
TL00069200	LT285/55R22*	124/121R 10PR	RBL	34.8	11.6	8.5-(9.0)-10.0	15/32	S3525/D3195	80
TL00069300	31X10.50R15LT*	109Q 6PR	RBL	30.4	10.8	7.0-(8.5)-9.0	15/32	2270	50
TL00064700	35X11.50R17LT*	121R 10PR	RBL	34.7	12.1	7.5-(9.0)-10.0	15/32	3195	80
TL00050000	35X12.50R17LT*	121R 10PR	RBL	34.7	13.1	8.0-(10.0)-10.5	15/32	3195	65
TL00101100	37X12.50R17LT*	128R 10PR	RBL	36.5	13.3	8.0-(10.0)-10.5	15/32	3970	65
TL00068600	33X12.50R18LT*	122Q 12PR	RBL	32.8	12.7	8.5-(10.0)-11.0	15/32	3305	80
TL00050100	35X12.50R18LT*	128Q 12PR	RBL	34.8	12.9	8.5-(10.0)-11.0	15/32	3970	80
TL00065600	33X12.50R20LT*	119Q 12PR	RBL	32.8	12.4	8.5-(10.0)-11.0	15/32	3000	80
TL00066600	35X12.50R20LT*	125Q 12PR	RBL	34.8	12.8	8.5-(10.0)-11.0	15/32	3640	80
TL00049900	37X12.50R20LT*	128R 12PR	RBL	36.7	12.9	8.5-(10.0)-11.0	15/32	3970	80
TL00065200	37X13.50R20LT*	128Q 12PR	RBL	36.8	14.0	9.5-(11.0)-12.0	15/32	3970	80
TL00065400	40X13.50R20LT*	128Q 10PR	RBL	39.8	14.1	9.0-(11.0)-11.5	15/32	3970	65
TL00065300	35X12.50R22LT*	121Q 12PR	RBL	34.8	12.4	8.5-(10.0)-11.0	15/32	3195	80
TL00066500	37X12.50R22LT*	127Q 12PR	RBL	36.9	12.7	8.5-(10.0)-11.0	15/32	3860	80
TL00065500	37X13.50R22LT*	128Q 12PR	RBL	37.0	13.8	9.5-(11.0)-12.0	15/32	3970	80
TL00064900	37X13.50R24LT*	124Q 12PR	RBL	36.7	13.3	9.5-(11.0)-12.0	15/32	3525	80

RAZR MT



PART #	SIZE	Service Description	Sidewall	Overall Diameter (in.)	Section Width (in.)	APPROVED Rim Width (in.)	Tread Depth (in.)	Max Load (lbs)	UTQG
TL00015200	LT245/75R16*	120/116Q 10PR	RBL	30.4	10.2	6.5-(7.0)-8.0	18/32	S3042/D2778	80
TL00042200	LT265/70R16*	121/118Q 10PR	RBL	30.9	11.1	7.0-(8.0)-9.0	18/32	S3195/D2910	80
TL00450100	LT265/75R16*	123/120Q 10PR	RBL	31.9	11.0	7.0-(7.5)-9.0	18/32	S3415/D3085	80
TL00442100	LT285/75R16*	126/123Q 10PR	RBL	33.0	11.8	7.5-(8.0)-9.5	18/32	S3750/D3415	80
TL00361100	LT315/75R16*	127/124Q 10PR	RBL	34.8	12.8	8.0-(8.5)-10.5	20/32	S3860/D3525	65

*3-ply construction; RBL - Raised Black Lettering

RAZR MT continued

PART #	SIZE	Service Description	Sidewall	Overall Diameter (in.)	Section Width (in.)	APPROVED Rim Width (in.)	Tread Depth (in.)	Max Load (lbs)	Max Infl. Pressure (psi)
TL00020800	LT265/70R17*	121/118Q 10PR	RBL	31.9	11.1	7.0-(8.0)-9.0	18/32	S3195/D2910	80
TL00494100	LT285/70R17*	121/118Q 10PR	RBL	33.0	11.8	7.5-(8.5)-9.0	18/32	S3195/D2910	80
TL00495100	LT295/70R17*	121/118Q 10PR	RBL	33.5	12.3	7.5-(8.5)-10.0	19/32	S3195/D2910	80
TL00459100	LT305/70R17*	121/118Q 10PR	RBL	34.0	12.8	8.0-(9.0)-10.0	20/32	S3195/D2910	65
TL00225100	LT315/70R17*	121/118Q 8PR	RBL	34.6	13.3	8.0-(9.5)-10.5	19/32	S3195/D2910	50
TL00466100	LT275/65R18*	123/120Q 10PR	RBL	32.5	11.1	8.0-(8.0)-9.5	18/32	S3415/D3085	80
TL00453100	LT275/70R18*	125/122Q 10PR	RBL	33.5	11.3	7.0-(8.0)-9.0	18/32	S3640/D3305	80
TL00036900	LT285/65R18*	125/122Q 10PR	RBL	32.8	11.5	8.5-(8.5)-10.0	18/32	S3640/D3305	80
TL00441100	LT285/75R18*	129/126Q 10PR	RBL	35.0	11.8	7.5-(8.0)-9.5	18/32	S4080/D3750	80
TL00433100	LT295/65R18*	127/124Q 10PR	RBL	33.5	12.1	8.5-(8.5)-10.5	19/32	S3860/D3525	80
TL00421100	LT295/70R18*	129/126Q 10PR	RBL	34.6	12.3	7.5-(8.5)-10.0	19/32	S4080/D3750	80
TL00431100	LT275/65R20*	126/123Q 10PR	RBL	34.5	11.2	8.0-(8.0)-9.5	18/32	S3750/D3415	80
TL00438100	LT295/55R20*	123/120Q 10PR	RBL	33.4	12.1	8.5-(9.5)-10.5	19/32	S3415/D3085	80
TL00374100	LT295/60R20*	126/123Q 10PR	RBL	34.4	12.2	8.5-(8.5)-10.5	19/32	S3750/D3415	80
TL00452100	LT295/65R20*	129/126Q 10PR	RBL	35.7	12.0	8.5-(8.5)-10.5	19/32	S4080/D3750	80
TL00504100	32X11.50R15LT*	113Q 6PR	RBL	31.8	11.9	7.5-(9.0)-10.0	20/32	2535	50
TL00015400	33X10.50R15LT*	114Q 6PR	RBL	32.8	11.1	7.0-(8.5)-9.0	19/32	2600	50
TL00505100	33X12.50R15LT*	108Q 6PR	RBL	32.9	13.3	8.0-(10.0)-10.5	20/32	2205	35
TL00521100	35X12.50R15LT*	113Q 6PR	RBL	34.8	13.5	8.0-(10.0)-10.5	20/32	2535	35
TL00392100	35X12.50R17LT*	121Q 10PR	RBL	34.8	13.2	8.0-(10.0)-10.5	19/32	3195	65
TL00443100	35X13.50R17LT*	121Q 10PR	RBL	34.8	14.2	8.5-(11.0)-11.0	20/32	3195	65
TL00037100	37X13.50R17LT*	121Q 8PR	RBL	36.8	14.4	9.0-(11.0)-11.5	20/32	3195	50
TL00015300	40X13.50R17LT*	121Q 6PR	RBL	39.9	14.3	9.0-(11.0)-11.5	20/32	3195	35
TL00043900	33X12.50R18LT*	122Q 12PR	RBL	32.9	12.8	8.5-(10.0)-11.0	20/32	3305	80
TL00364100	35X12.50R18LT*	123Q 10PR	RBL	34.8	13.2	8.5-(10.0)-11.0	20/32	3415	65
TL00039700	35X12.50R18LT*	128Q 12PR	RBL	34.8	13.2	8.5-(10.0)-11.0	20/32	3970	80
TL00460100	37X12.50R18LT*	123Q 8PR	RBL	36.9	13.0	8.0-(10.0)-10.5	20/32	3415	50
TL00037200	33X12.50R20LT*	119Q 12PR	RBL	32.8	12.5	8.5-(10.0)-11.0	20/32	3000	80
TL00015500	35X12.50R20LT*	121Q 10PR	RBL	34.8	13.0	8.5-(10.0)-11.0	20/32	3195	65
TL00039800	35X12.50R20LT*	125Q 12PR	RBL	34.8	12.9	8.5-(10.0)-11.0	20/32	3640	80
TL00036300	37X12.50R20LT*	128Q 12PR	RBL	36.8	12.5	8.5-(10.0)-11.0	19/32	3970	80
TL00436100	37X13.50R20LT*	127Q 10PR	RBL	36.9	14.3	9.5-(11.0)-12.0	20/32	3860	65
TL00039900	37X13.50R20LT*	128Q 12PR	RBL	36.8	14.3	9.5-(11.0)-12.0	20/32	3970	80
TL00388100	38X13.50R20LT*	128Q 10PR	RBL	37.7	14.3	9.5-(11.0)-12.0	20/32	3970	65
TL00445100	40X13.50R20LT*	128Q 10PR	RBL	39.8	14.1	9.0-(11.0)-11.5	20/32	3970	65
TL00037000	35X12.50R22LT*	121Q 12PR	RBL	35.0	12.5	8.5-(10.0)-11.0	20/32	3195	80
TL00036400	37X12.50R22LT*	127Q 12PR	RBL	36.8	12.5	8.5-(10.0)-11.0	20/32	3860	80
TL00383100	37X13.50R22LT*	123Q 10PR	RBL	36.8	13.9	9.5-(11.0)-12.0	20/32	3415	65
TL00034600	40X15.50R24LT*	128Q 12PR	RBL	40.0	15.5	11.0-(12.5)-14.0	20/32	3970	80

TREPADOR BIAS M8060

PART #	SIZE	Service Description	Sidewall	Overall Diameter (in.)	Section Width (in.)	APPROVED Rim Width (in.)	Tread Depth (in.)	Max Load (lbs)	Max Infl. Pressure (psi)
TL30006600	35X12.50-15LT*	121L 8PR	BSW	35.1	13.2	8.0-(10.0)-10.5	22/32	3195	45
TL30024200	35X12.50-16LT*	120L 8PR	BSW	35.0	13.2	8.5-(10.0)-11.0	22/32	3085	45
TL30024300	37X12.50-16LT*	124L 8PR	BSW	37.0	13.4	8.5-(10.0)-11.0	23/32	3525	45
TL30007500	35X12.50-17LT*	119L 8PR	BSW	34.6	12.6	8.0-(10.0)-10.5	22/32	3000	45
TL30025400	37X12.50-17LT*	124L 10PR	BSW	37.1	13.3	8.0-(10.0)-10.5	23/32	3525	45
TL30027200	37X13.50-17LT*	126L 10PR	BSW	37.3	14.5	9.0-(11.0)-11.5	22/32	3750	60
TL00007800	40X13.50-17LT*	123L 8PR	BSW	40.2	14.8	9.0-(11.0)-11.5	23/32	3420	45
TL00008200	42X14.50-17LT*	121L 6PR	BSW	42.9	15.3	9.5-(11.5)-12.5	22/32	3195	30
TL00008000	35X12.50-20LT*	121L 10PR	BSW	35.1	12.2	8.5-(10.0)-11.0	22/32	3195	60



TREPADOR COMP M8060

PART #	SIZE	Service Description	Sidewall	Overall Diameter (in.)	Section Width (in.)	APPROVED Rim Width (in.)	Tread Depth (in.)	Max Load (lbs)	Max Infl. Pressure (psi)
TL30025200	37X12.50-17LT*	124L 10PR	BSW	37.1	13.3	8.0-(10.0)-10.5	23/32	3525	45
TL00007900	40X13.50-17LT*	123L 8PR	BSW	40.1	14.8	9.0-(11.0)-11.5	23/32	3415	45
TL00007700	42X14.50-17LT*	121L 6PR	BSW	42.9	15.3	9.5-(11.5)-12.5	22/32	3195	30



BRAVO UE-168

PART #	SIZE	Service Description	Sidewall	Overall Diameter (in.)	Section Width (in.)	APPROVED Rim Width (in.)	Tread Depth (in.)	Max Load (lbs)	Max Infl. Pressure (psi)
TL12411200	185R14C	102/100R	BSW	25.7	7.4	5.0-(5.5)-6.0	11/32	S1875/D1765	65
TL12458000	205R14C	109/107Q	BSW	27.1	8.3	5.5-(6.0)-6.5	11/32	S2271/D2150	65
TL12468000	205/70R14C	102/100Q	BSW	25.4	8.3	5.5-(6.0)-6.5	13/32	S1874/D1764	54
TL15800000	215/70R15C	109/107R	BSW	27.0	8.5	5.5-(6.5)-7.0	13/32	S2271/D2149	65
TL15821000	225/70R15C	112/110R	BSW	27.4	8.9	6.0-(6.5)-7.0	13/32	S2469/D2337	65
TL16001200	LT235/75R15	110/107Q	BSW	28.9	9.6	6.0-(6.5)-8.0	13/32	S2335/D2150	65
TL30169000	LT215/85R16*	115/112Q	BSW	30.4	8.9	5.5-(6.0)-7.0	13/32	S2680/D2470	80
TL30158000	LT225/75R16	115/112Q	BSW	29.3	9.0	6.0-(6.0)-7.5	12/32	S2680/D2470	80
TL30186000	LT235/85R16*	120/116Q	BSW	31.8	9.6	6.0-(6.5)-7.5	14/32	S3042/D2778	80
TL00016100	LT235/80R17*	120/117Q	BSW	31.8	9.0	6.0-(6.5)-8.0	13/32	S3085/D2835	80



M8008 Plus

PART #	SIZE	Service Description	Sidewall	Overall Diameter (in.)	Section Width (in.)	APPROVED Rim Width (in.)	Tread Depth (in.)	Max Load (lbs)	Max Infl. Pressure (psi)
TL00097200	ST175/80R13	91/87N 6PR	BSW	24.1	7.2	4.5-(5.0)-6.0	8/32	S1360/D1200	50
TL00097300	ST185/80R13	94/89N 6PR	BSW	24.7	7.5	4.5-(5.0)-6.0	9/32	S1480/D1280	50
TL00097400	ST205/75R14	100/96N 6PR	BSW	26.1	8.1	5.0-(5.5)-7.0	9/32	S1760/D1570	50
TL00097500	ST205/75R14	105/101N 8PR	BSW	26.1	8.0	5.0-(5.5)-7.0	9/32	S2040/D1820	65
TL00097600	ST215/75R14	102/98N 6PR	BSW	26.7	8.6	5.5-(6.0)-7.0	9/32	S1870/D1650	50
TL00096600	ST205/75R15	101/97N 6PR	BSW	27.1	8.1	5.0-(5.5)-7.0	9/32	S1820/D1610	50
TL00096700	ST205/75R15	107/102N 8PR	BSW	27.1	8.1	5.0-(5.5)-7.0	9/32	S2150/D1870	65
TL00096800	ST225/75R15	113/108N 8PR	BSW	28.3	8.9	6.0-(6.0)-7.5	9/32	S2540/D2200	65
TL00096900	ST225/75R15	117/112N 10PR	BSW	28.3	8.9	6.0-(6.0)-7.5	9/32	S2830/D2470	80
TL00097000	ST235/80R16	123/119N 10PR	BSW	30.8	9.4	6.0-(6.5)-8.0	9/32	S3420/D3000	80



UR275

PART #	SIZE	Service Description	Sidewall	Overall Diameter (in.)	Section Width (in.)	APPROVED Rim Width (in.)	Tread Depth (in.)	Max Load (lbs)	Max Infl. Pressure (psi)
TL00082600	ST235/80R16	129/125L 14PR	BSW	30.7	9.1	6.0-(6.5)-8.0	10/32	S4080/D3640	110
TL00046900	ST235/85R16	132/127L 14PR	BSW	31.5	9.3	6.0-(6.5)-7.5	12/32	S4400/D3860	110
TL36500000	215/75R17.5	135/133J 16PR	BSW	30.4	8.5	6.0-(6.0)-7.5	15/32	S4805/D4540	123

*3-ply construction; BSW - Black Sidewall

TIRE SAFETY

IMPORTANT TIRE INFORMATION

When customers choose Maxxis, they're getting a product designed to deliver safety along with performance. But even the best tires must be used with caution and with close attention to safe practices. Following the guidelines and recommendations below will help to reduce the chance of accident or injury.

» Always refer to the vehicle's tire information placard.

- It is preferable to replace a vehicle's tires with ones that correspond to the vehicle's manufacturer-recommended specifications.
- Tire speed ratings and load-carrying capacity should always be equal to or greater than the original equipment tires.

» Service Description

Most tires have a service description that appears at the end of the tire size. This service description has a two-digit number which represents the load index, and a letter which represents the speed rating. Example: 86H. The load index represents the maximum load each tire is designed to carry at the tire's maximum inflation pressure.

» Speed Rating

Speed ratings are certified sustained speed designations assigned to passenger car radials and high performance tires. In the U.S., these ratings are based on tire testing in laboratory conditions under simulated loads. For a tire to be speed-rated, it must meet certain minimum government standards for reaching and maintaining that specified speed. Any speed symbol denoting a fixed maximum speed capability will be at the end of the service description following the load index.

Tire installers should refer to the vehicle's owner's manual to identify any tire speed rating restriction or recommendation that could affect the operation of the vehicle. If the replacement tires have a lower speed rating than what is specified as original equipment, the consumer should be aware that the vehicle's speed must be restricted to that of the replacement tires. Maxxis does not recommend mixing tires of different speed ratings on a vehicle.

Note: Speed ratings apply only to the tire, not to the vehicle. Putting speed-rated tires on any vehicle does not mean that the vehicle can be operated at the tire's rated speed. Refer to the vehicle's operating manual for specific information.

» Ply Rating vs. Load Range

- Ply ratings and load ranges denote the load capability and inflation limits of a given tire size when used in a specified type of service.
- Ply Rating: An older method of rating load capacity. These are shown as 4-ply rated, 6-ply rated, 8-ply rated, etc.
- Load Range: This is the current method of rating the tire's load-carrying capacity and is denoted by letters: B, C, D, E, etc.

» Uniform Tire Quality Grade (UTQG)

The UTQG, which is required by the government, provides comparative manufacturer information. Tires are subjected to a series of government-mandated tests that measure performance of treadwear, traction and temperature resistance. All testing is done by the individual manufacturer.

- Treadwear: A measurement of tread durability. Tested against an industry standard, the assigned numerical grade indicates how well the tread lasts compared to a reference of 100. Actual wear depends on the conditions under which the tire is used. Driving habits, vehicle maintenance, road surface differences and climate variations all affect treadwear.

- Traction: A measurement of the tire's ability to stop on wet test surfaces of asphalt and concrete under controlled conditions. Traction grades are assigned by the UTQG system and branded on the sidewall of the tire. The traction grade is determined only for straight-ahead wet braking. It does not include cornering, which might be important for customer performance needs.

- Temperature (resistance): a measure of resistance to heat generation under normal operating conditions. The test is conducted under predetermined standards for inflation and loading. Excessive speed, under-inflation and overloading can all cause adverse heat build-up. Sustained high temperatures can reduce tire durability. Temperature grades are branded on the sidewall of the tire.

» DOT (Department of Transportation) Certification

A DOT brand on the tire's sidewall indicates that the tire has been certified by the Department of Transportation. Following the DOT brand is a serial number that denotes the tire's manufacturer, the manufacturing plant, tire size code and date of manufacture. While consumer tire registration is voluntary, federal law requires that the selling dealer record the DOT identification numbers and provide the DOT registration form to the consumer.

» Mounting Procedures

Be sure to observe the following when mounting Maxxis tires:

- Lubricate both top and bottom beads with an approved lubricant. Never exceed 40 PSI to seat the beads.
- Both tire beads should be securely seated on the rim.
- Always replace a tire with another tire of the same bead diameter designation and suffix letters.
- A new valve stem should be installed in the rim each time a worn tire (passenger or light truck) is replaced.
- Never put any flammable substance in the tire/rim assembly at any time. Never use any flammable substance in a tire/rim assembly and attempt to ignite in order to seat the beads.
- Be sure that the wheel is securely seated on the hub face.
- Do not stand, lean or reach over the assembly during inflation.
- Be sure that all lug nuts have been properly torqued to the manufacturer's specifications.
- Be sure that there is no build-up of dirt or debris between the hub and the wheel.
- Be sure that the wheel is not bent or damaged. The wheel should not be used if:
 - The flange is bent.
 - The welds or rivets are leaking.
 - The stud holes are elongated (rather than round).
 - The wheel has more than 1/16" radial or lateral run-out.

TIRE SAFETY

- Matching tires on four-wheel drive and all-wheel drive vehicles: special attention should be paid to ensure that all four tires are closely matched in height and width to avoid strain and possible damage to the vehicle. Tire inflation pressure also affects the tire's rolling circumference and should be matched according to the vehicle manufacturer's recommendations. Always check the vehicle manufacturer's recommendations prior to installing new tires.

Warning: improper mounting, under-inflation, overloading or tire damage may result in tire failure, which may lead to serious injury or death. Tire and rim sizes must correspond for proper fit and application.

Warning: Tire changing can be dangerous and should be done only by trained persons using proper tools and procedures as established by the Rubber Manufacturers Association. Failure to comply with proper procedures may result in incorrect positioning of the tire or wheel assembly which could cause the assembly to explode with enough force to cause serious physical injury or death. Never mount or use damaged tires.

» **If replacing fewer than four tires:**

It is always preferred and Maxxis recommends that ALL FOUR tires be replaced at the same time to optimize vehicle performance. In those cases where it is not feasible to install four new tires at the same time, some general guidelines are below. However, if the vehicle manufacturer has alternate recommendations, always follow those guidelines.

Replacing two tires: When only two new tires are purchased, they should be installed on the rear axle, as long as the new tires have a speed rating equal to or greater than the speed rating as compared to the front tires. Generally, new tires will provide better grip and evacuate water more effectively, which is important when a driver encounters hydroplaning situations. When placed on the rear axle, new tires or tires with deeper tread depth than the front tires provide greater traction on wet surfaces. This can also help prevent a possible oversteer condition and loss of vehicle stability.

Replacing one tire: While not recommended, if a single tire re-

placement is unavoidable, it is best to pair the new tire with the tire that has the deepest tread, and that both be placed on the rear axle. When placed on the rear axle, new tires or tires with deeper tread depth than the front tires provide greater traction on wet surfaces. This can also help prevent a possible oversteer condition and loss of vehicle stability.

» **Tire Speed Rating Chart**

The rating system shown below displays the top speed for which a tire is certified. It does not indicate the total performance capacity of a tire. This information will not be found on all tires. The speed rating denotes the speed for which a tire was designed to be driven for extended periods.

Rating Symbol	Speed (km/h)	Speed (mph)	Rating Symbol	Speed (km/h)	Speed (mph)
B	50	31	P	150	93
C	60	37	Q	160	99
D	65	40	R	170	106
E	70	43	S	180	112
F	80	50	T	190	118
G	90	56	U	200	124
J	100	62	H	210	130
K	110	68	V	240	149
L	120	75	W	270	168
M	130	81	Y	300	186
N	140	87	ZR	Over 240	Over 150

For tires having a maximum speed capability above 149 mph (240 km/h), a "ZR" may appear in the size designation. For tires having a maximum speed capability above 186 mph (300 km/h), a "ZR" must appear in the size designation, including a "Y" speed symbol in brackets. Example: P275/40R17 93W at 168 mph (270km/h) or P275/40ZR17 at above 149 mph (240 km/h).

ALL THE TIRES IN THIS CATALOG ARE TUBELESS.

TIRE SAFETY

Riding on worn tires can cause loss of traction, leading to an accident and possible serious injury.

Replace your tires when there is only 2/32" of tread depth remaining! All DOT-approved tires have a tread-wear indicator bar woven into the tread pattern. While this small piece of rubber appears to be a bridge between the two tire grooves, it is only 2/32" high. When the top of this indicator bar is even with the plane of the tread pattern, replace your tires.

Another way to judge this indicator: Stick a penny, head down, in the tread. Seeing the top of Lincoln's head means that you're down to 2/32" and your tires must be replaced.

For optimum safety, especially in wet conditions, replace your tires when you have 4/32" of tread remaining.

Always choose the original size or the size recommended by your manufacturer when replacing your tires. Replacing tires of different speed ratings, sizes or construction could lead to improper tire performance, tire failure and accident, causing possible serious injury or death.

Changing the size of your tire's height, width, load capacity and/or tread design can change your tire's performance.

If you must use tires of differing profiles, mount the widest tires on the rear of the vehicle.

TIRE SAFETY

Don't mix radial and non-radial tires. If you mix radial and non-radial tires, you may have trouble with consistent handling. Handling problems can lead to loss of vehicle control, accidents, injuries and death.

If you must measure the width of your tires, be sure that the tires are mounted on a rim recommended by the Tire and Rim Association (T&RA) at the specified tire pressure.

Depending on a tire's construction, if a tire is mounted on too narrow or too wide a rim, the tire's profile will be changed. The resulting change can unbalance and stress the tire's body and lead to poor performance, tire failure, accidents, injury and/or death.

Never use P-metric automotive tires as replacements for light truck tires or on a vehicle equipped with dual-rear tires. Each tire is manufactured with a specific speed rating and load requirements to ensure proper vehicle use.

Damaged or incorrectly mounted tires can suddenly fail, causing serious injury or death. Tires should only be repaired by professionals!

NEVER OVERLOAD YOUR TIRES! Overloading can cause a range of problems – everything from poor handling and poor mileage to failure of vehicle components or tire failure. Tire failure can cause accidents, leading to serious injuries and death. Check your owner's manual to be sure that you're within safety limits for the load your tires can handle. If you're having tires mounted, be sure to check the load limit of the tires to be mounted. The load index of the replacement tires should always meet or exceed the maximum load of the original tires.

Proper tire inflation is essential! Your vehicle cannot handle its load without the right amount of air pressure – and the results could be disastrous, including accidents, serious injuries and death. Most tire failures are caused by under-inflation. Proper inflation is also essential for your vehicle's performance. Unless your tires are properly inflated, you won't get the best gas mileage from your vehicle. In

fact, you could lose as much as 5% of your car's optimum mileage by failing to properly inflate your tires.

Check your tire pressure at least once a month, and always check before long trips. Use a tire gauge, and be sure that your tires are still cold when you check them. If your vehicle still has its original tires, use the optimum pressure specified by the vehicle manufacturer as a guide. If you've replaced your tires, check with your dealer regarding optimum tire pressure.

REMEMBER: Your tires can be under-inflated long before you can see or feel any change. Don't trust your eyes, and don't trust your vehicle's feel; trust a tire gauge!

NEVER SPIN YOUR TIRES! Being stuck in mud or snow can be frustrating – but if you spin your tires, being stuck can be dangerous. Your tire might be spinning much faster than your speedometer indicates, causing injury or death as well as damage to your vehicle. A tire spinning off the ground presents an equal or greater hazard. **NEVER STAND BEHIND OR CLOSE TO A SPINNING TIRE!**

Excess speed is a danger to your tires, your vehicle and your safety! Driving above the speed limit can stress your tires, leading to sudden tire failure.

Remember that a mini-spare tire is a temporary fix, and is NOT designed to be ridden for long periods of time! NEVER drive over 50 miles per hour when using a mini-spare tire. Have a new tire installed as soon as possible.

Check the inflation in your spare tire as well. Spare tires lose air pressure over time. You don't want to discover that your spare tire is under-inflated when you need it most.

You should also periodically replace your spare to prevent damage from aging.

TIRE MAINTENANCE AND INFORMATION

Avoid irregular tire wear, which can contribute to poor tire performance and tire failure! Failing to rotate your tires at least every 6000-8000 miles also means that you'll have to replace them much more quickly. Always refer to your owner's manual for the rotation schedule and pattern specific to your vehicle.

Unbalanced tires, which can be caused by hitting curbs, potholes or other road hazards, affect your ride quality and tire life. You can usually detect an unbalanced tire through vibrations in the steering wheel at certain speeds. If you suspect that your tires may be unbalanced, have them inspected by a professional as soon as possible to avoid excessive wear and damage to your vehicle's front end parts.

Improper alignment will affect your car's tire wear, gas mileage, stability and overall performance. Even if you haven't noticed a problem, you should still have your car or truck aligned at least once a year as part of a regular maintenance program. If you think your vehicle might be out of alignment, your vehicle must be inspected by a professional as soon as possible. Have your tires inspected immediately if you notice any warning signs of

improper alignment, which include the following:

- Excessive or uneven wear
- Steering wheel pulling to the left or right
- Feeling of looseness or wandering
- Steering wheel vibration or shimmy
- Steering wheel isn't centered when car is moving straight ahead

If you will not be using your tires for a long period, don't leave them on your vehicle. Store unused tires in a cool, dry place away from sunlight and other elements which can accelerate tire aging over time.

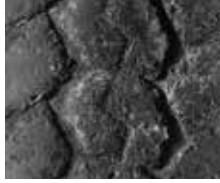
If you're using winter or snow tires, have them mounted on all four wheels. Using winter or snow tires only on the front of your vehicle is extremely dangerous and could lead to handling problems, loss of vehicle control, accident, injury and death.

Keep tires looking their best by cleaning with a mild soap or detergent and a semi-soft bristle brush. Rinse with clean, plain water.

TIRE ASSESSMENT CHART

ABNORMAL TREAD WEAR

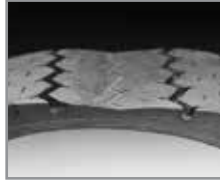
Tread wear issues appear as flat spots, or areas of rapid wear on the tire. They can also be seen as deformed tread blocks or cracking in the tread area. This type of wear is usually a result of brake problems, suspension or alignment problems, an unbalanced tire and wheel assembly, or misuse.



Mushroomed Tread



Rapid Shoulder Wear



Rapid Center Wear



Cracking Between Tread



Flatspot

SIDEWALL DAMAGE

Sidewall damage appears as cuts, tears, bubbles, or scrapes anywhere along the sidewall of the tire. This type of damage usually occurs when a tire encounters a road hazard. This could include anything from a curb to a bolt or piece of metal. Sharp objects or very concentrated stresses usually cause cuts and tears. Bubbles and scrapes occur due to impact damage or prolonged abrasion.



Letter Defect



Sidewall Bubble - A bulge that appears on the outside of a tire is usually a sign of separation.



Sidewall Tear



Sidewall Cut

TIRE SEPARATIONS

Separations appear as bulges on the shoulder or tread face, or as localized wear above the separated region. A groove worn along the shoulder could be a sign of separation. Separations are mainly caused by abnormal heat build-up. Excessive heat can buildup during prolonged high-speed driving, overloaded or under-inflated tire conditions. Separations can also be caused by penetration of water or foreign materials into the carcass of the tire. This material enters through cuts caused by road hazards.



Bead Separation



Tread Separation



Belt Separation



Shoulder Separation - A groove worn in the shoulder of the tire is usually evidence of separation.



ROAD HAZARD

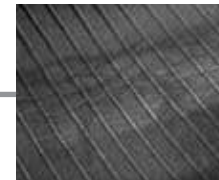
Road hazard damage appears as protruding objects or cuts in the tire. Misuse or neglect appears as wrinkles in the inner liner or scuffing that extends around the circumference of the tire. Road hazard damage occurs when a sharp object comes in contact with the tire. Misuse and neglect can occur to severely under-inflated tires or to tires with insufficient clearance between the tire and fenders. It can also occur when dual axle tires are overloaded, or there is not enough clearance between the two tires of the assembly.



Puncture - Normally, the only evidence of a puncture will be a cut that extends from the tread of the tire through the inner liner.



Under-Inflated Tire - An abrasion may run around the circumference of the tire and wrinkles may be observed in the inner liner.



BEAD PROBLEMS

Bead problems appear as a broken bead, chafing of the rubber around the bead, or deformation of the bead area. A broken bead can occur when a tire is mounted on an improper rim or carelessly mounted or dismounted. Bead chafing can occur when mounting a tire on a dirty or mismatched rim, or when the tire is in an overloaded or under-inflated condition. A bent or deformed bead usually occurs when the tire is improperly stored, or excessive stress is applied to the bead area during mounting.



Broken Bead



Damaged Bead



Bent Bead

MAXXIS
MAXXIS.COM

